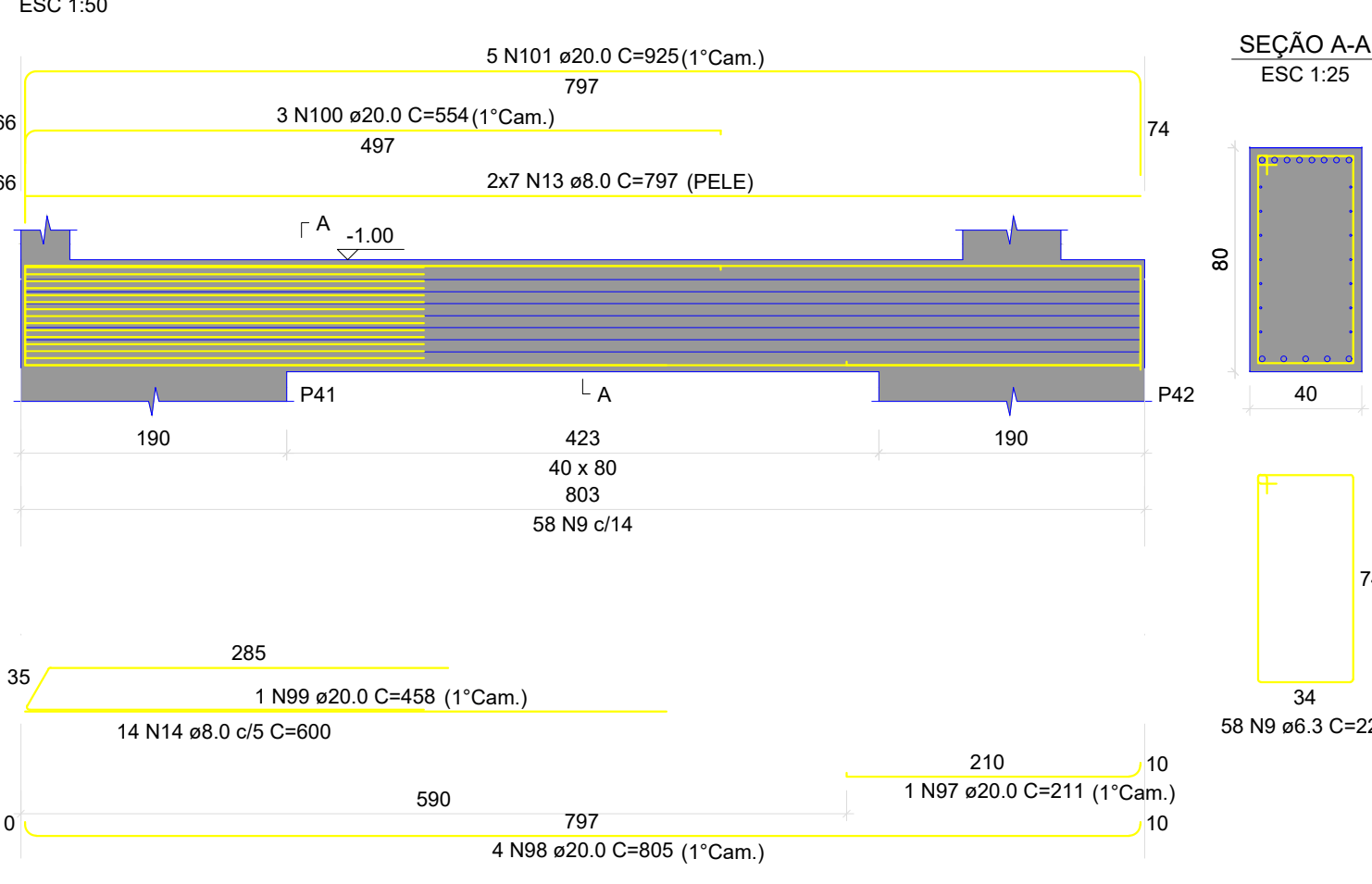
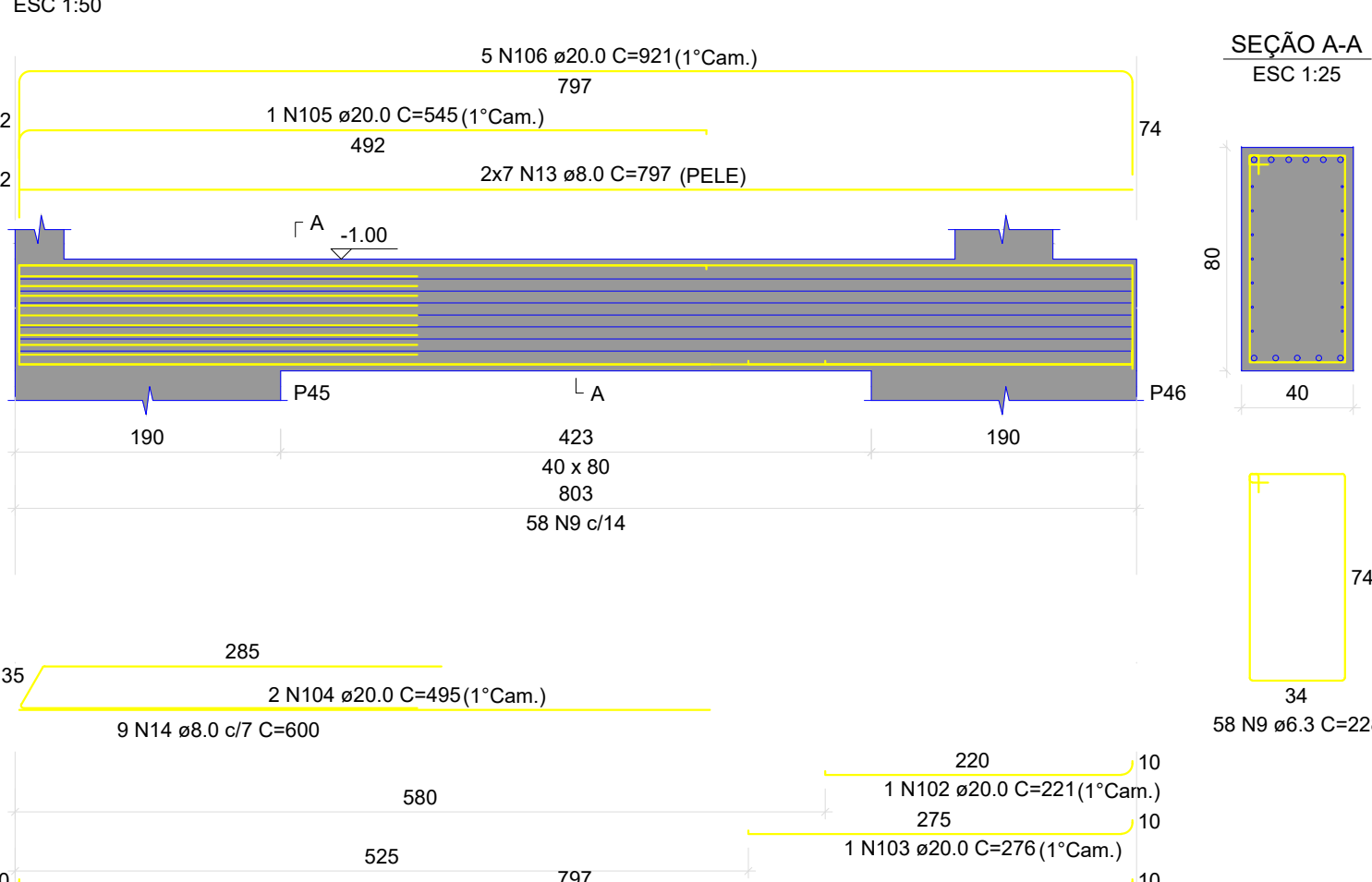


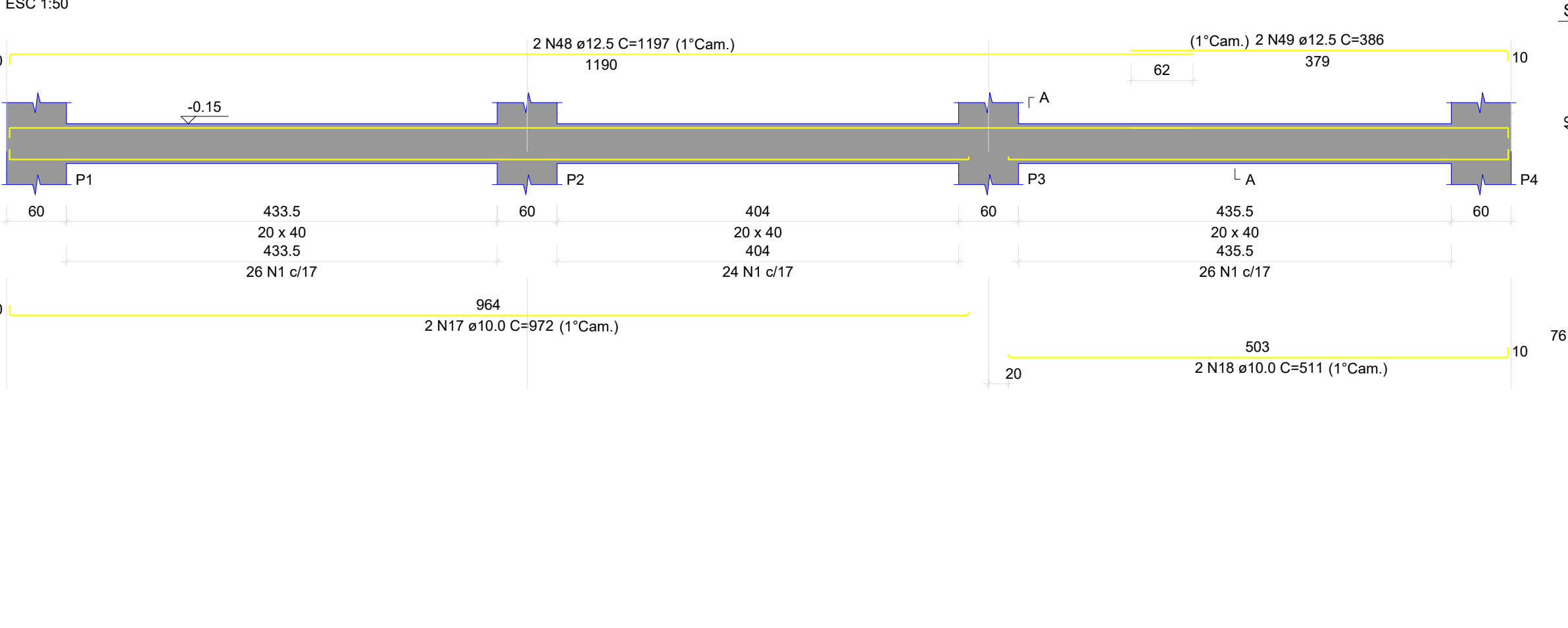
VA1



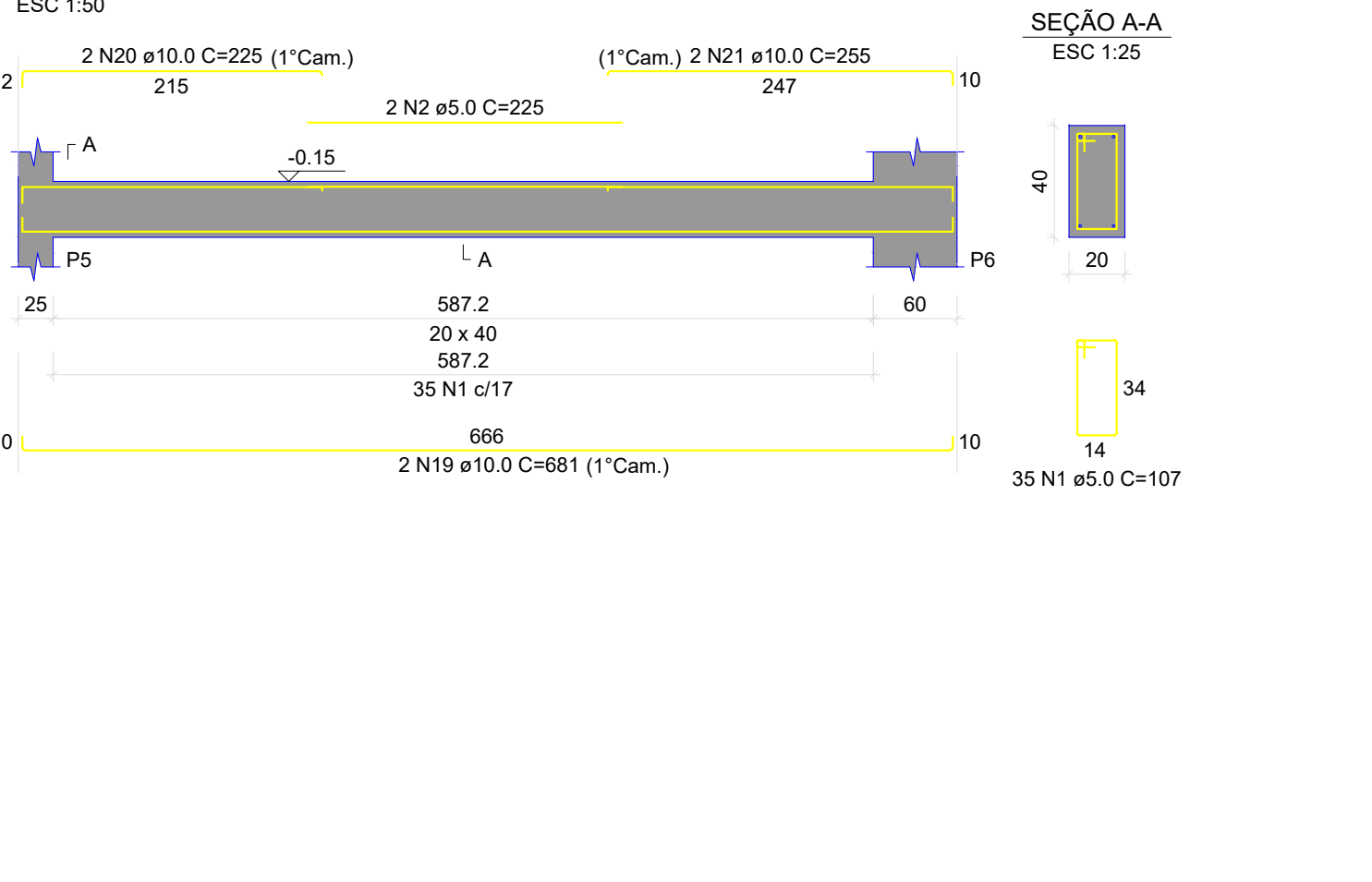
VA2



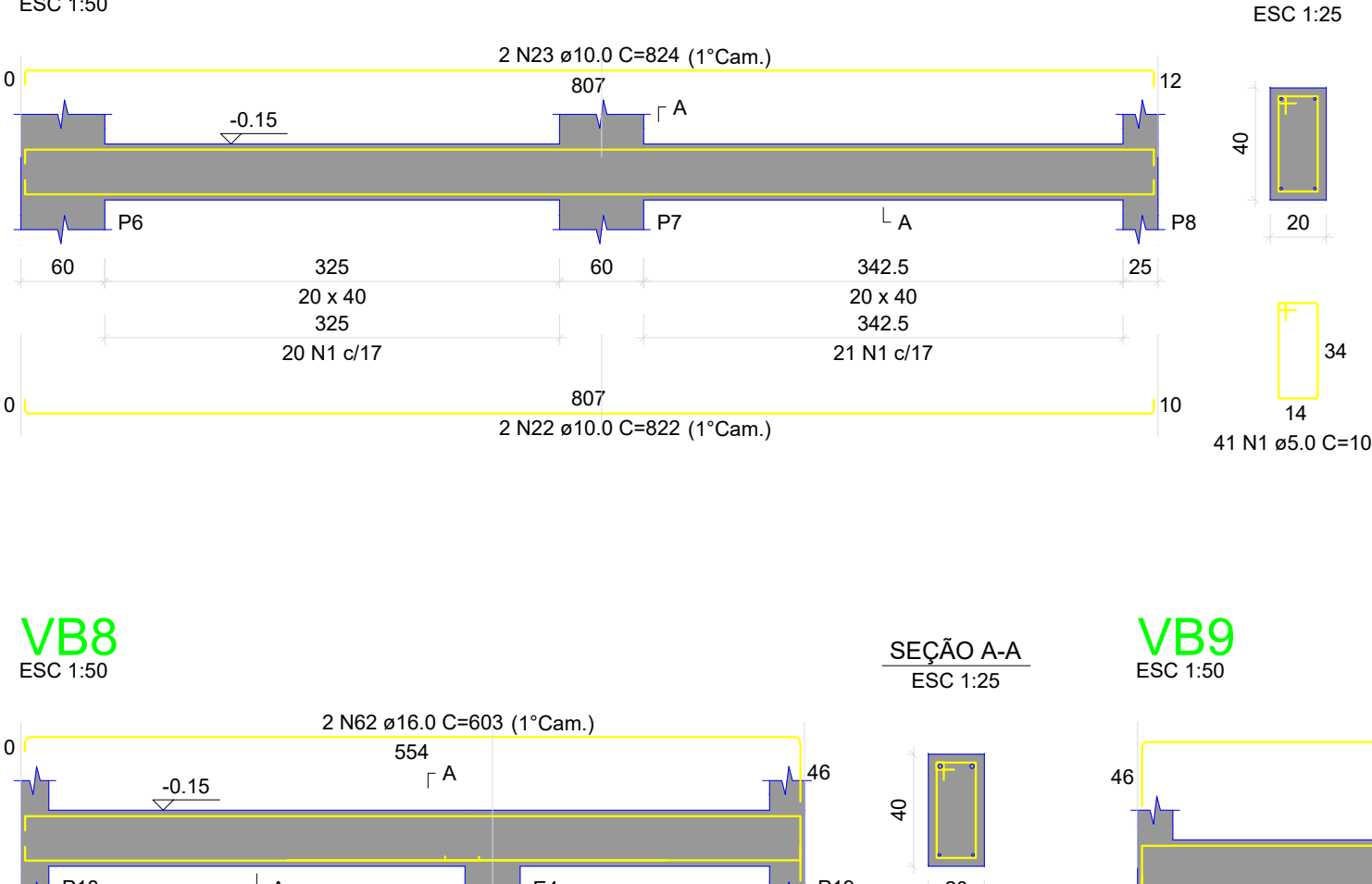
VB1



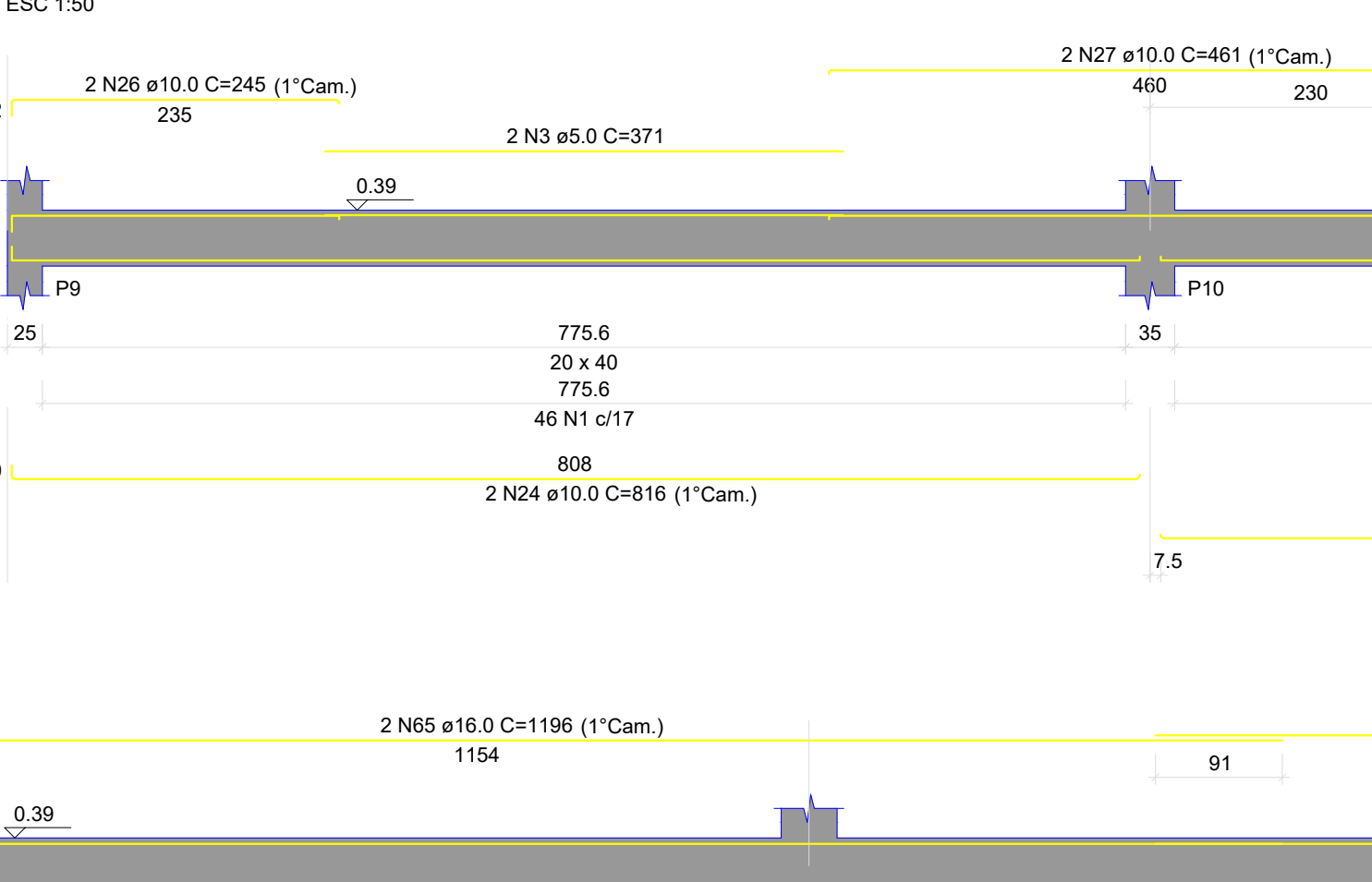
VB2



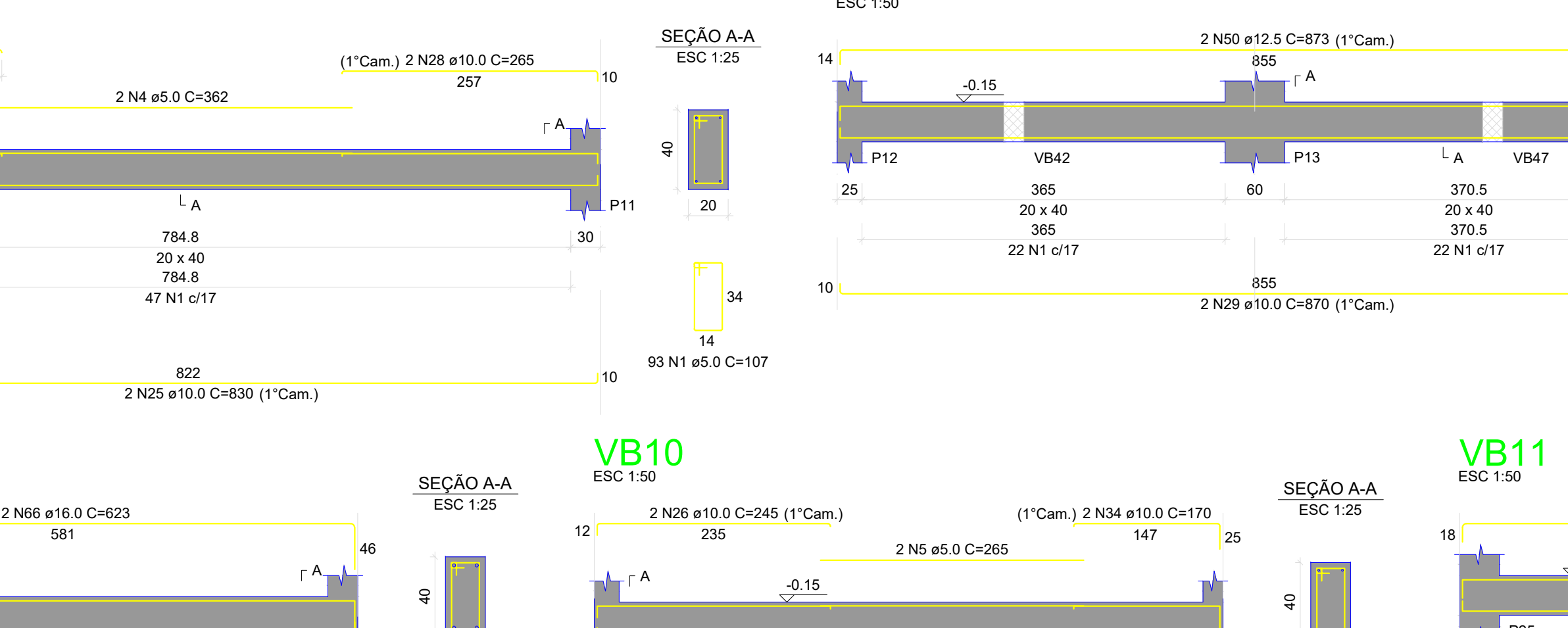
VB3



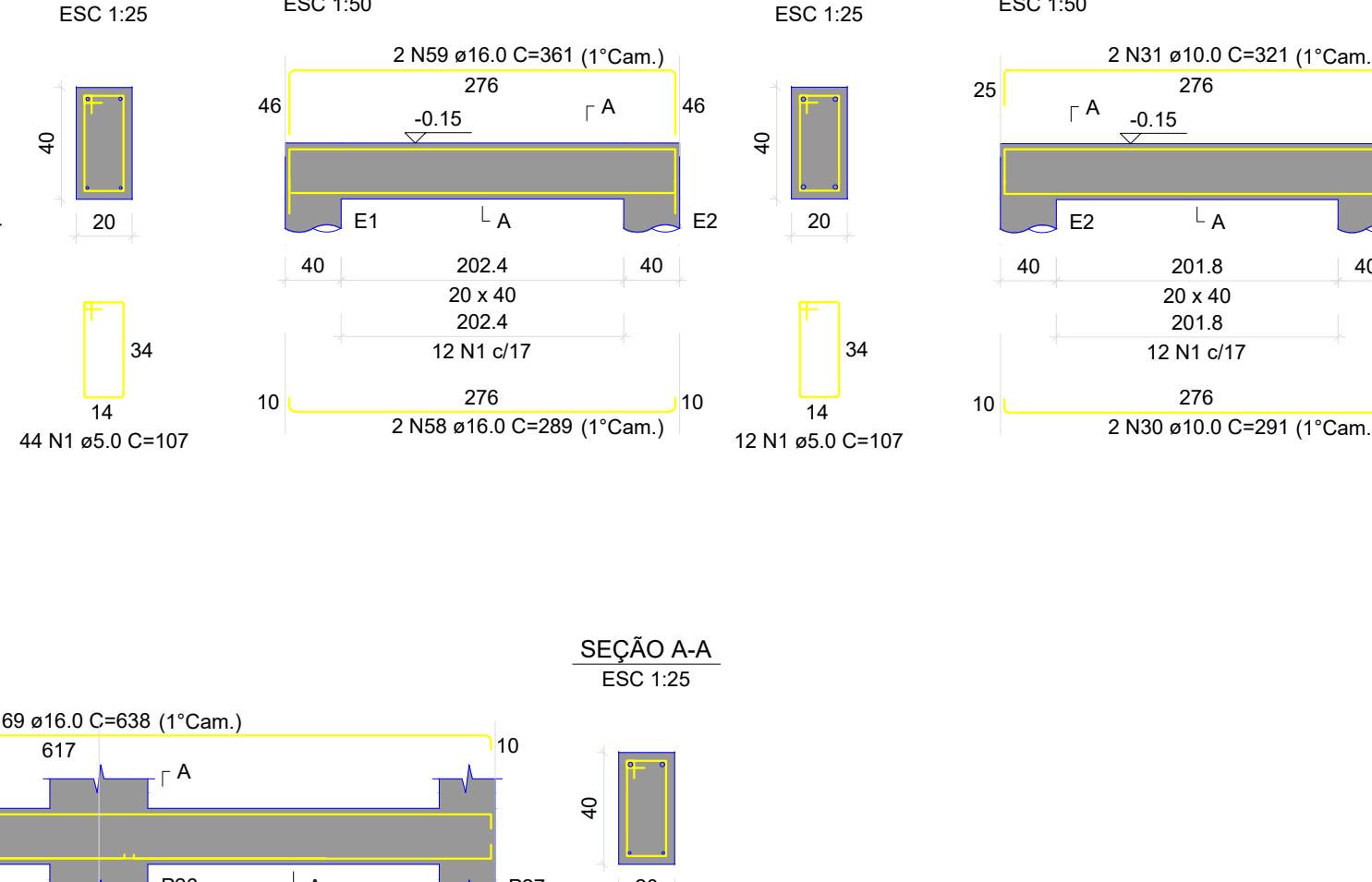
VB4



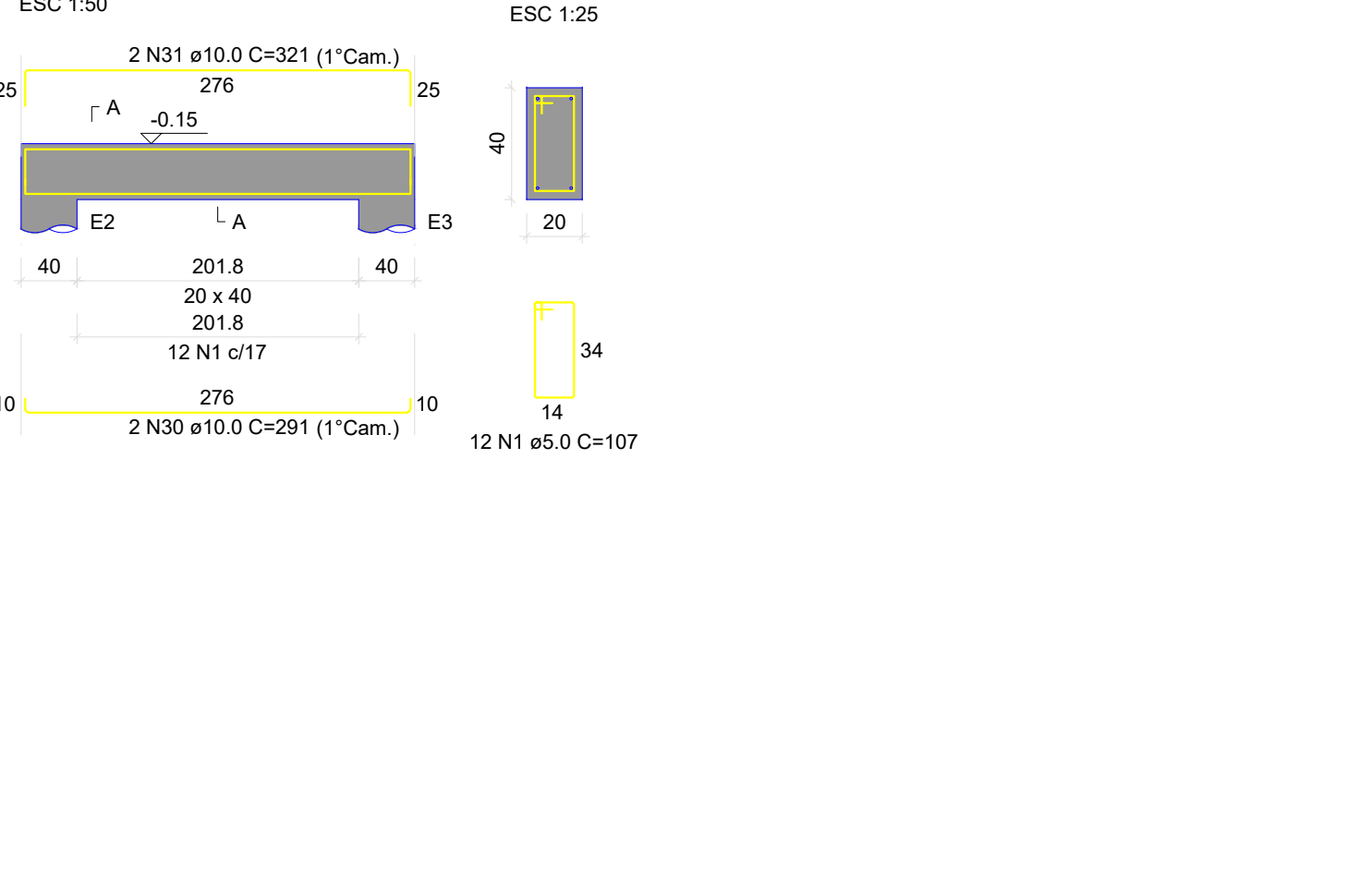
VB5



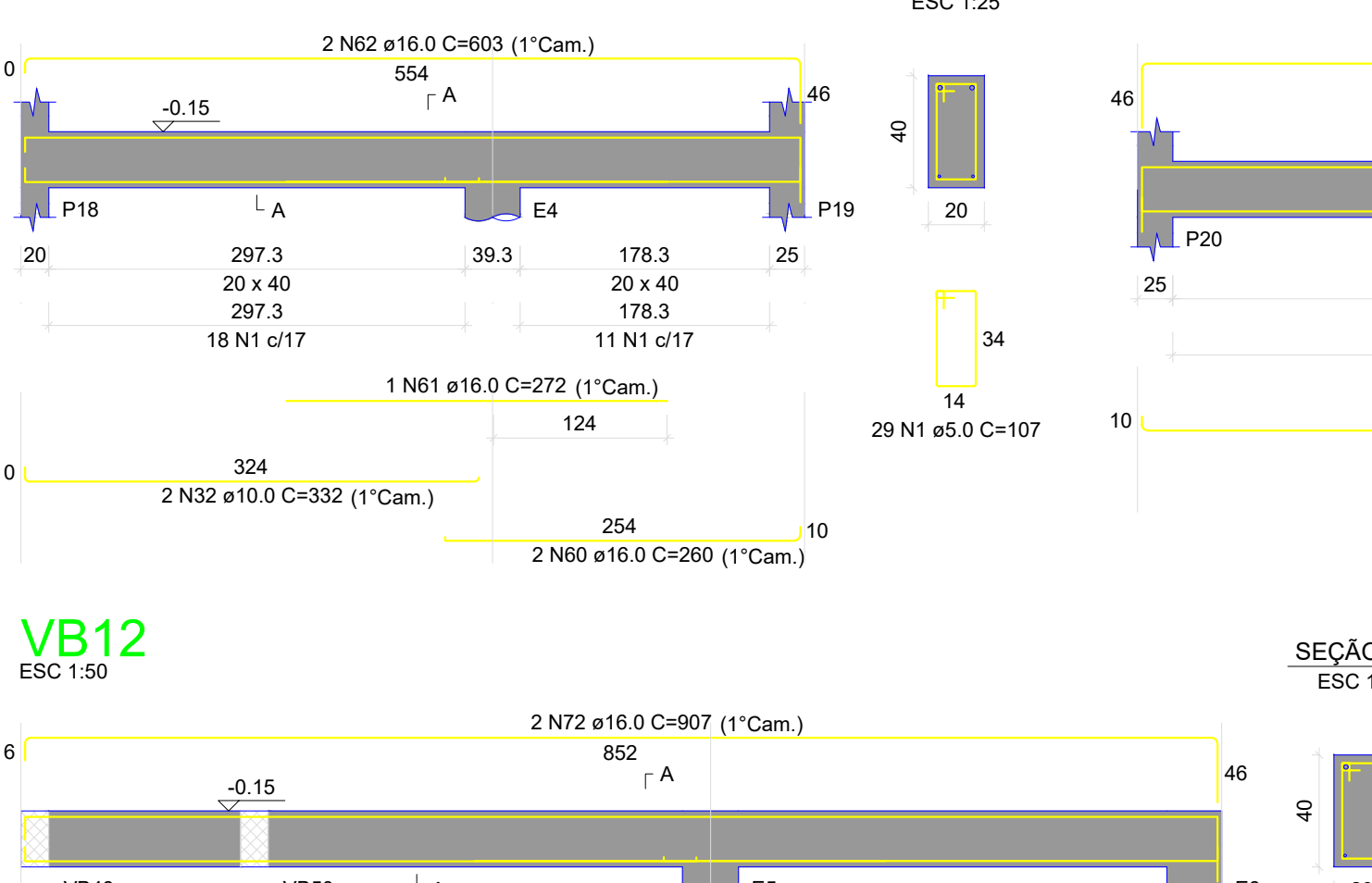
VB6



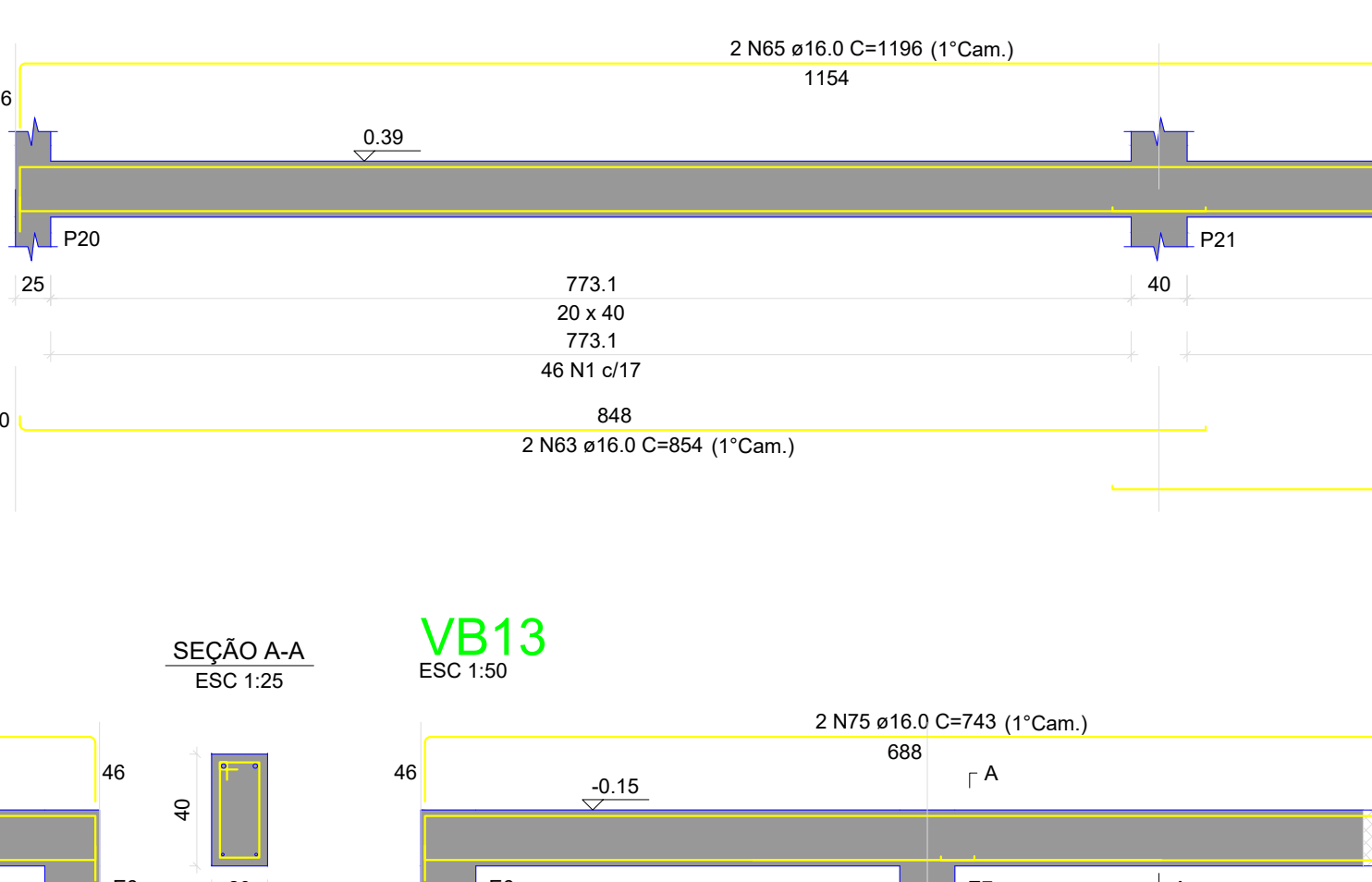
VB7



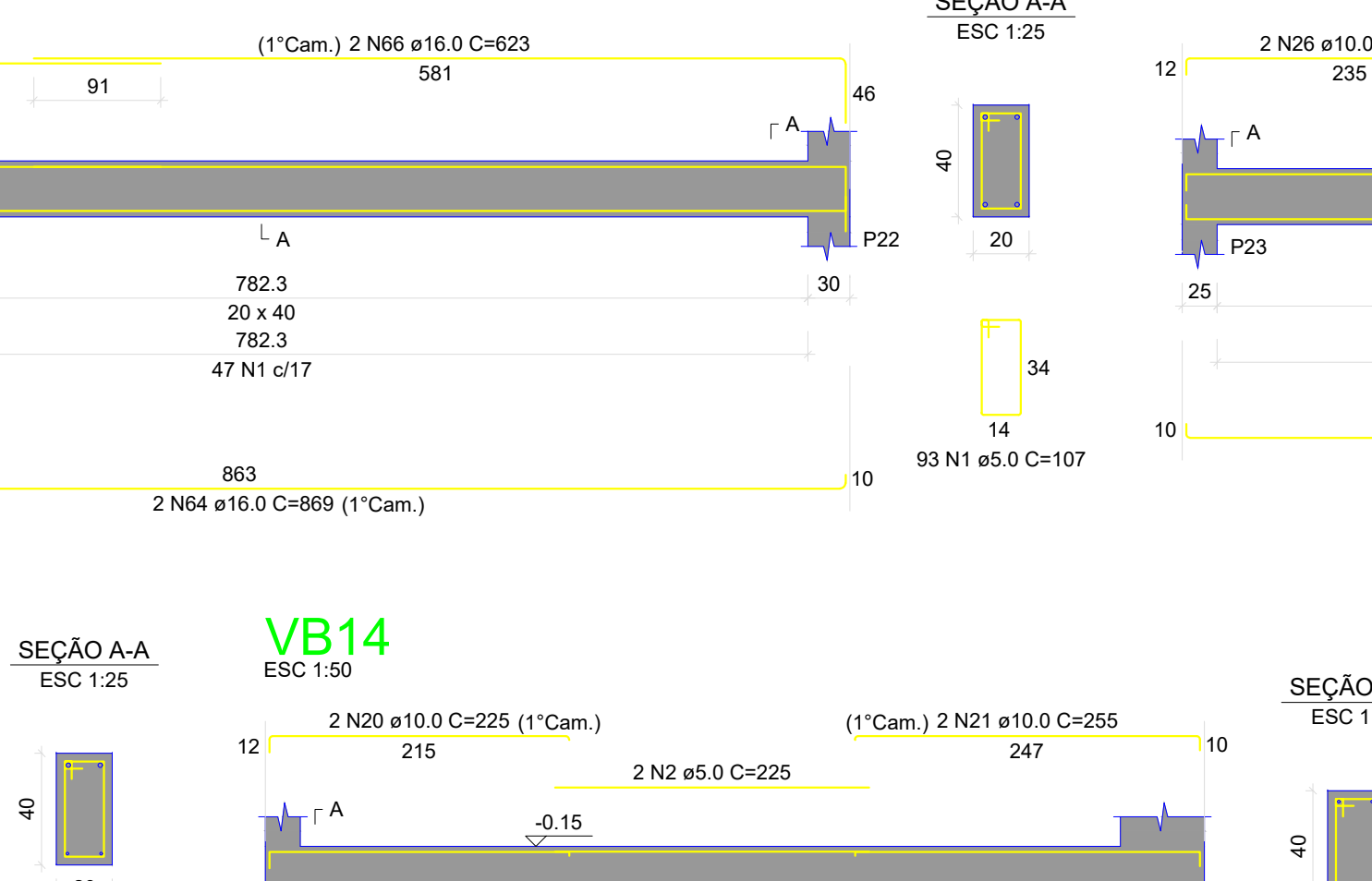
VB8



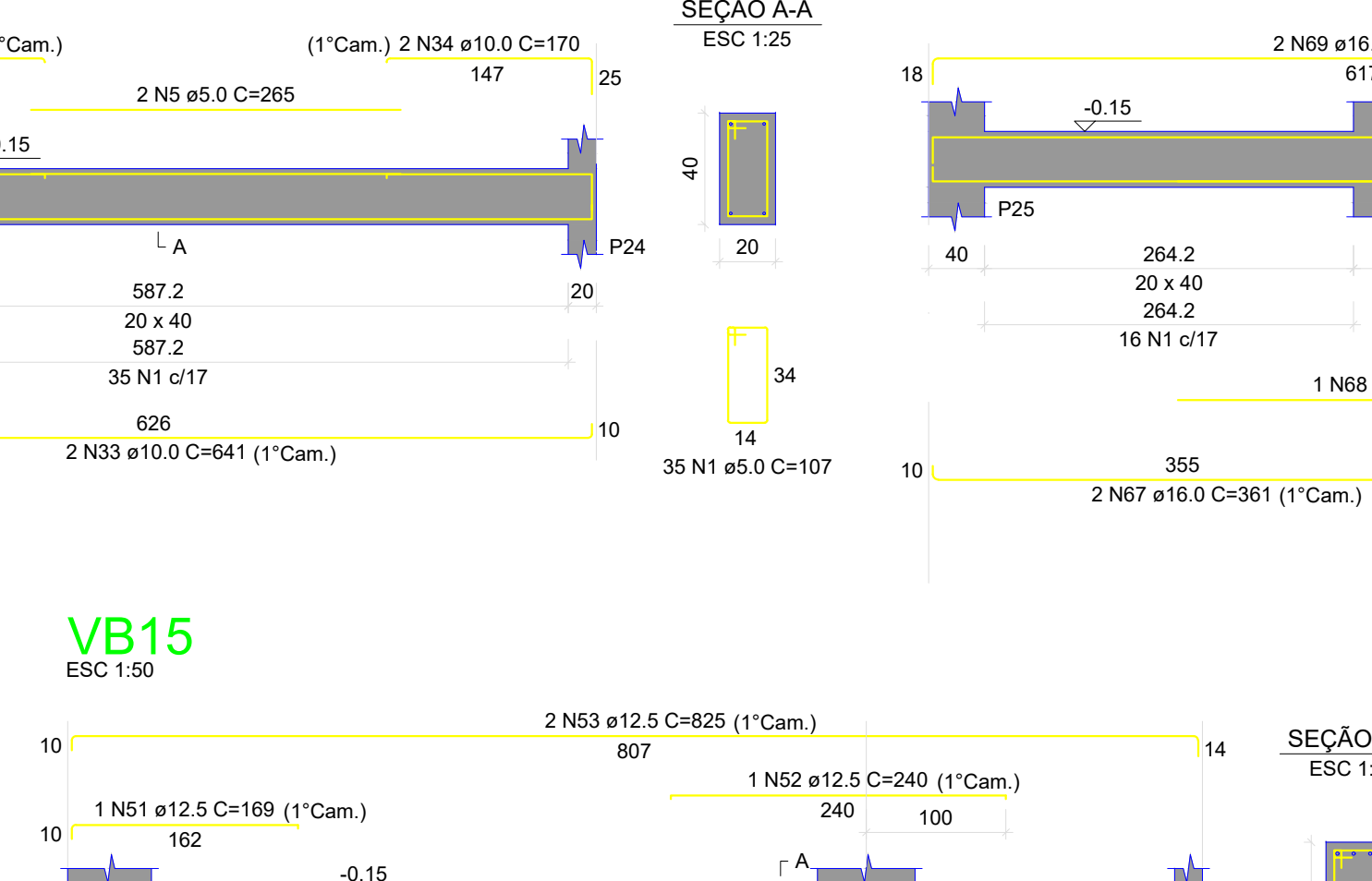
VB9



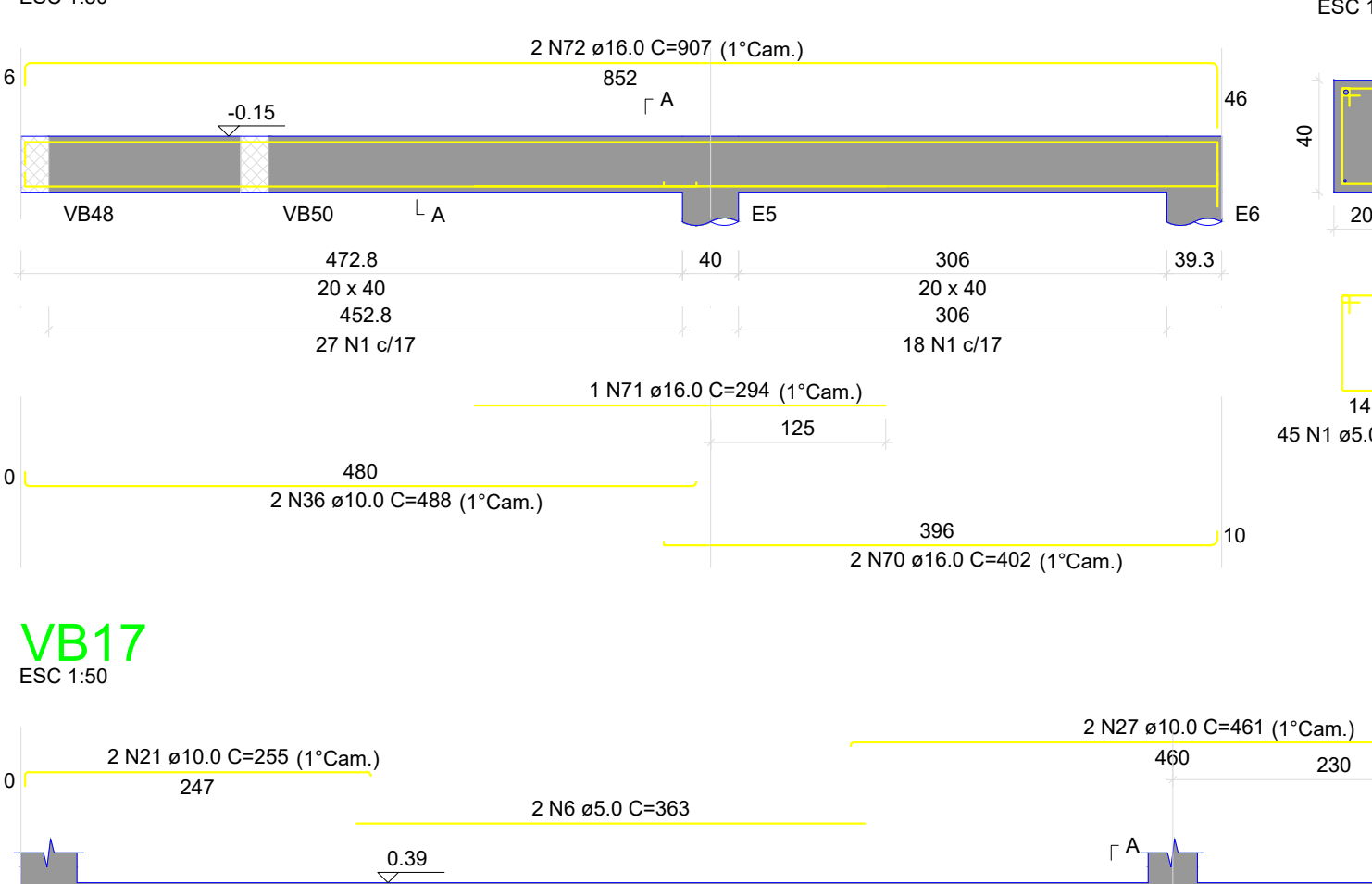
VB10



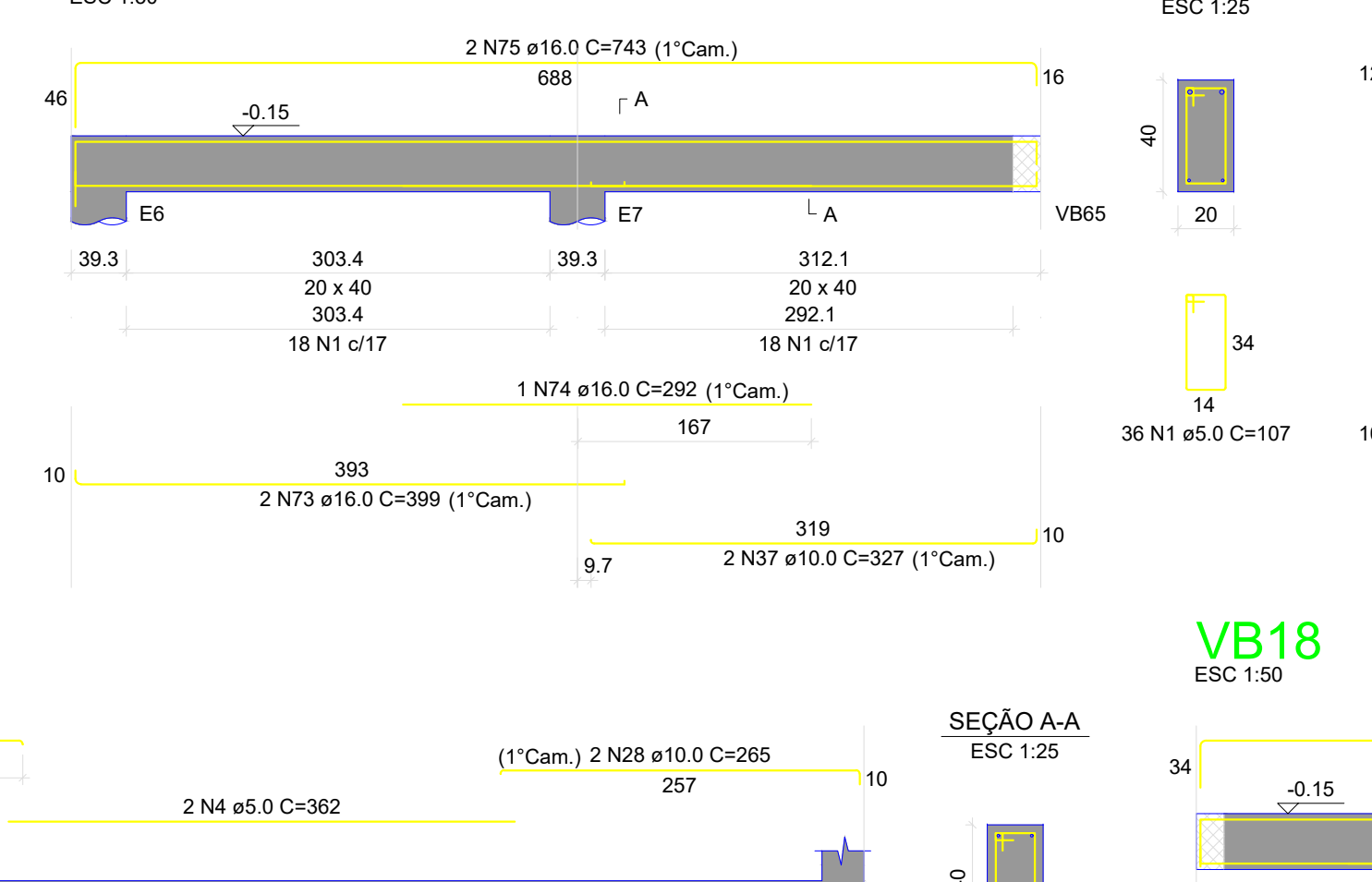
VB11



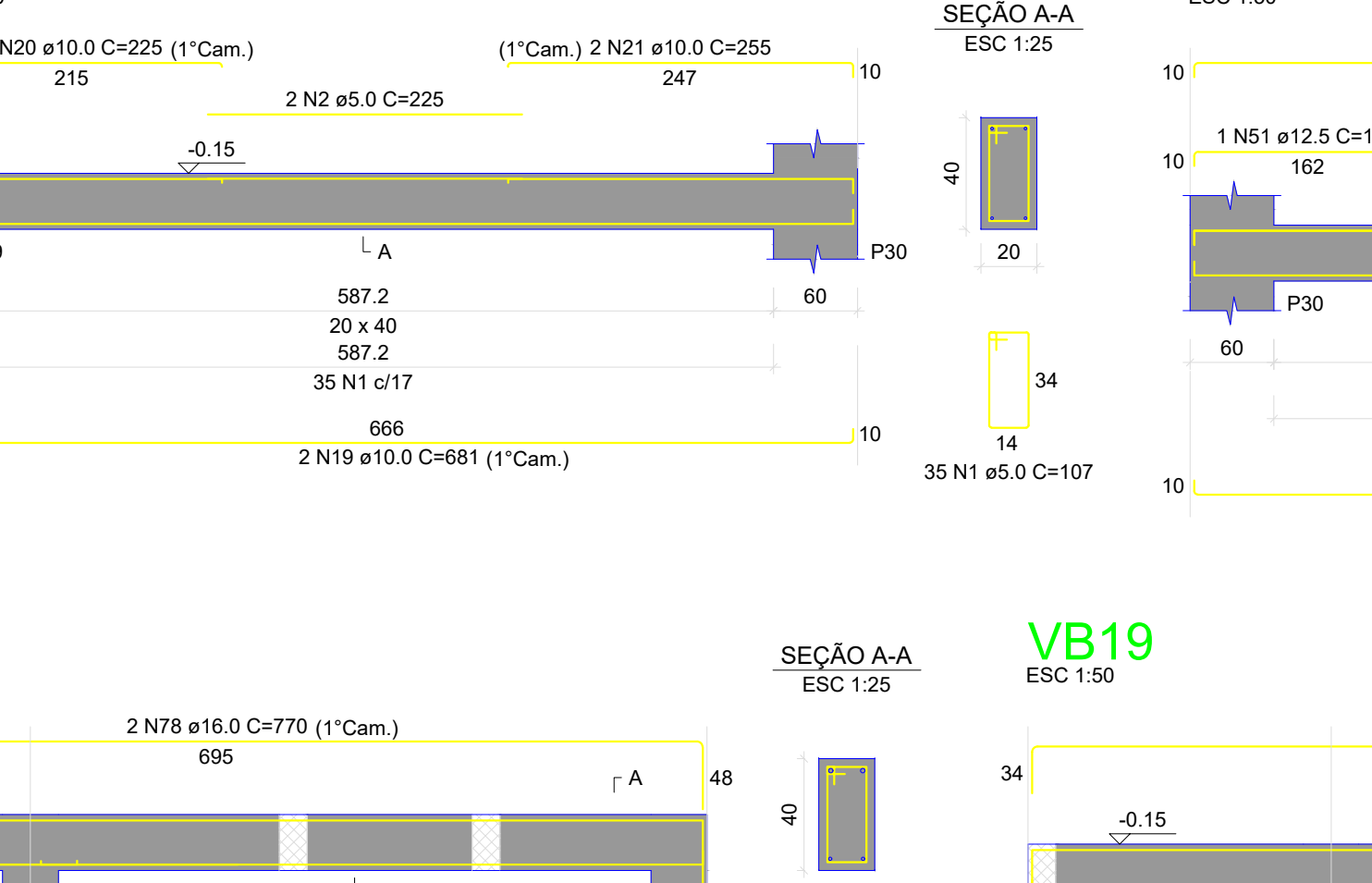
VB12



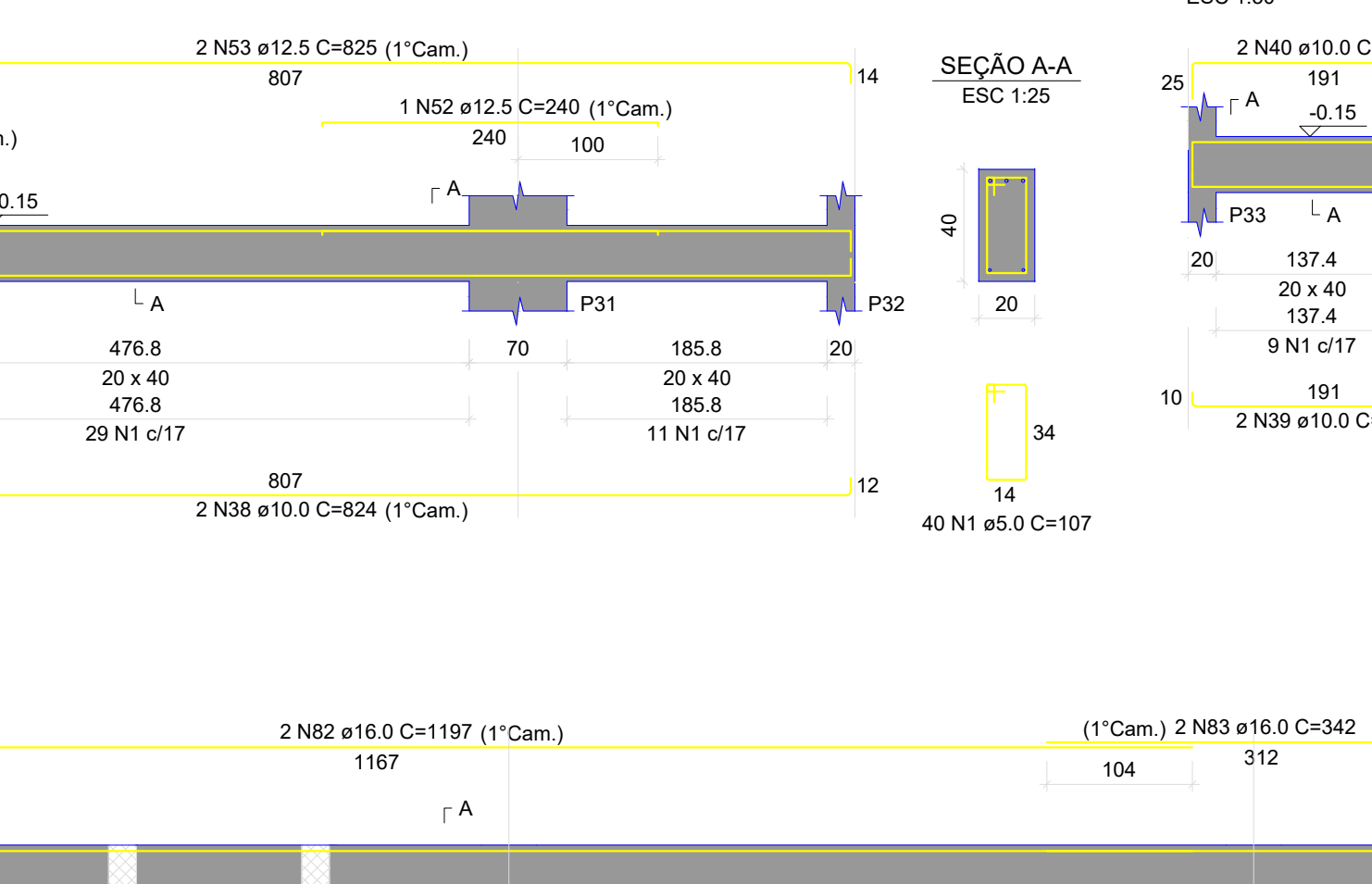
VB13



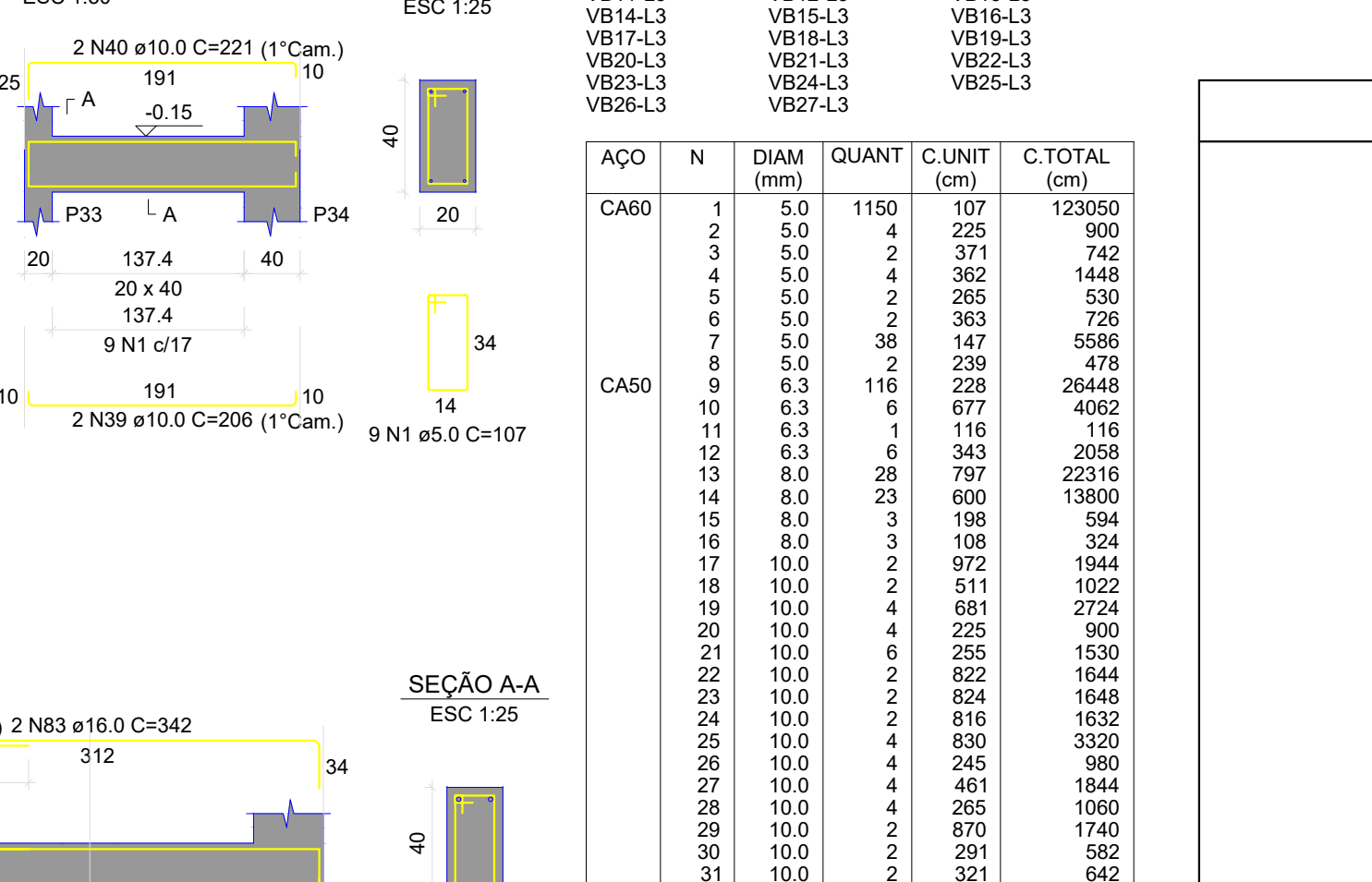
VB14



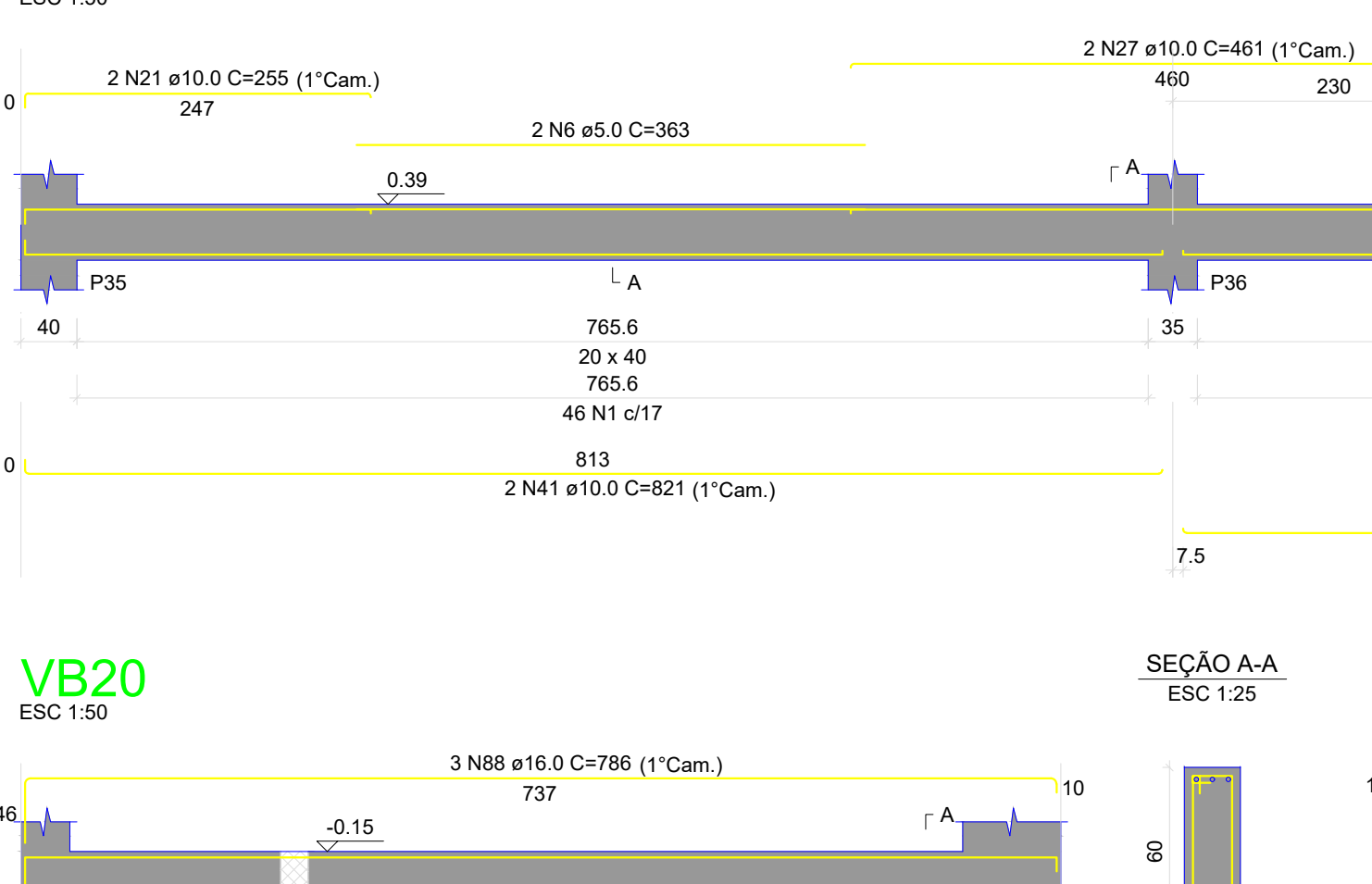
VB15



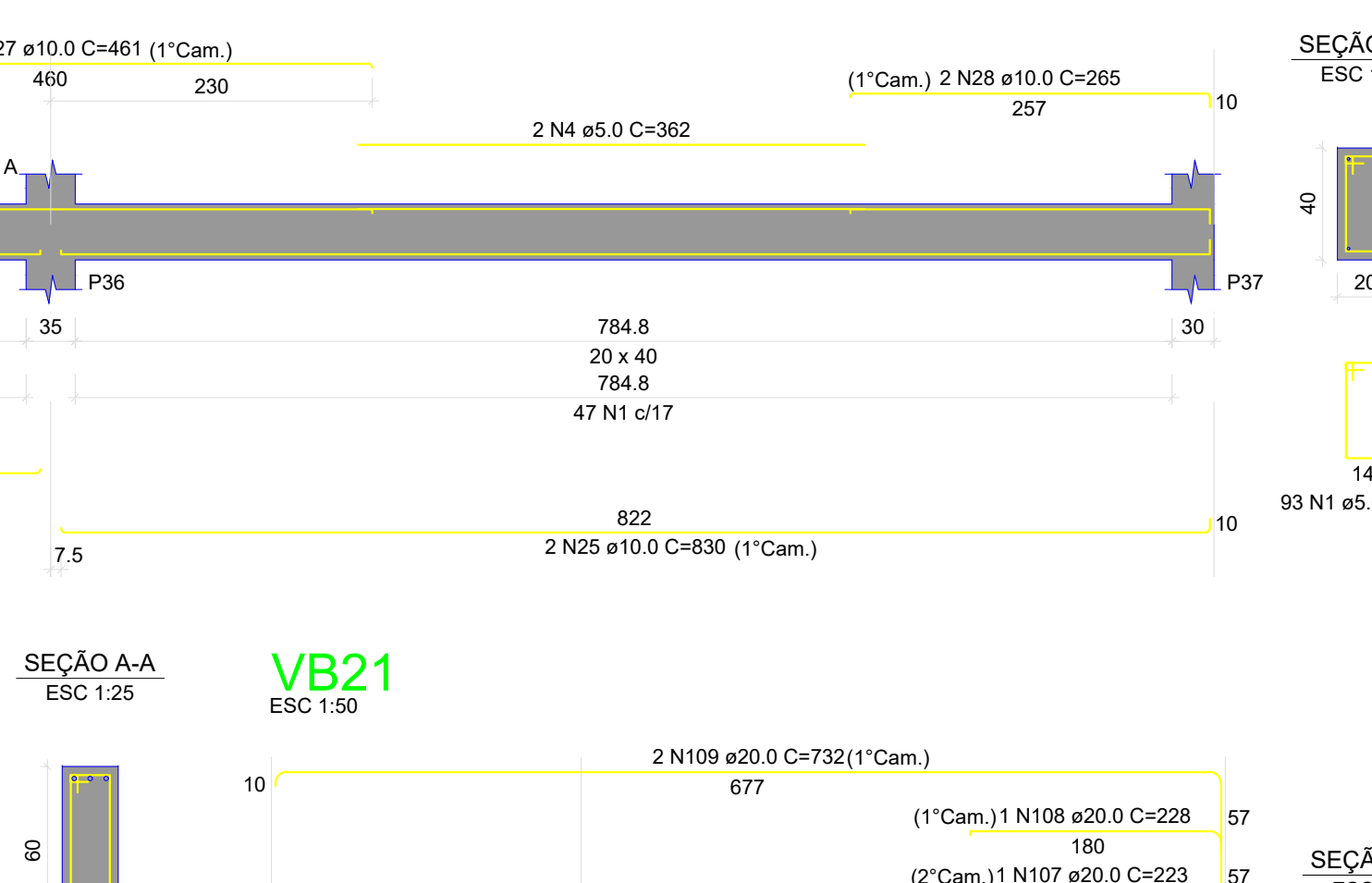
VB16



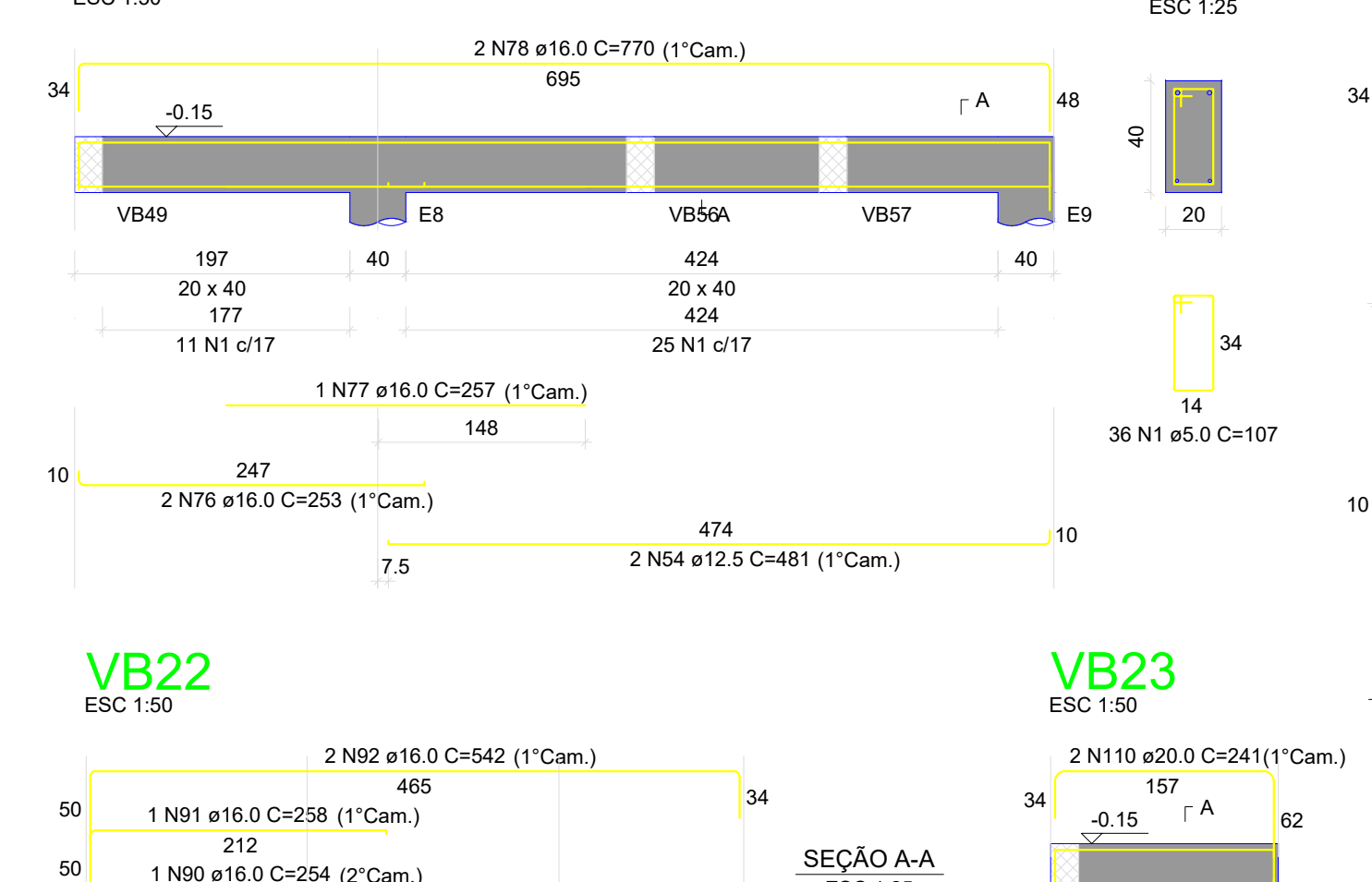
VB17



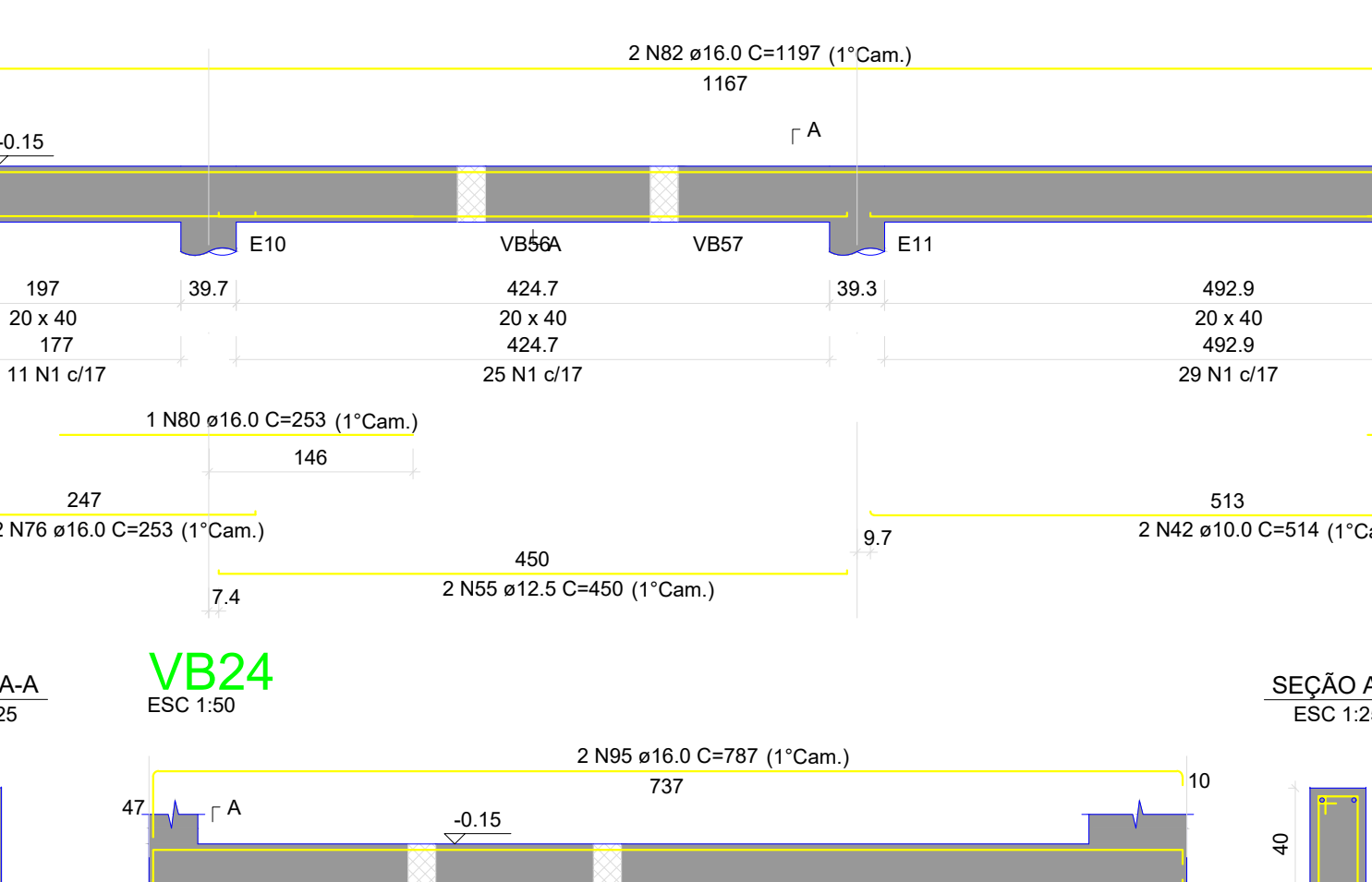
VB21



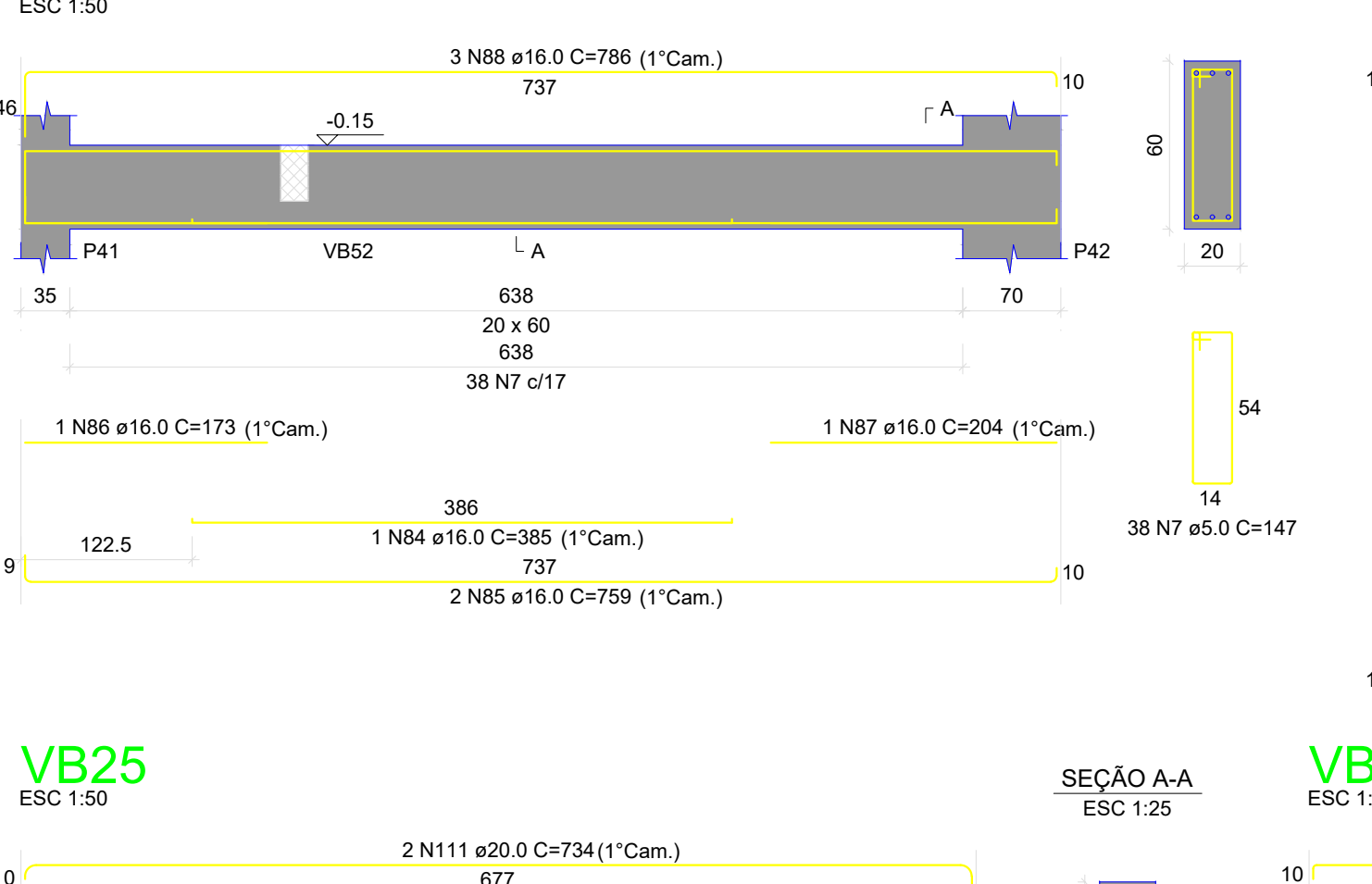
VB18



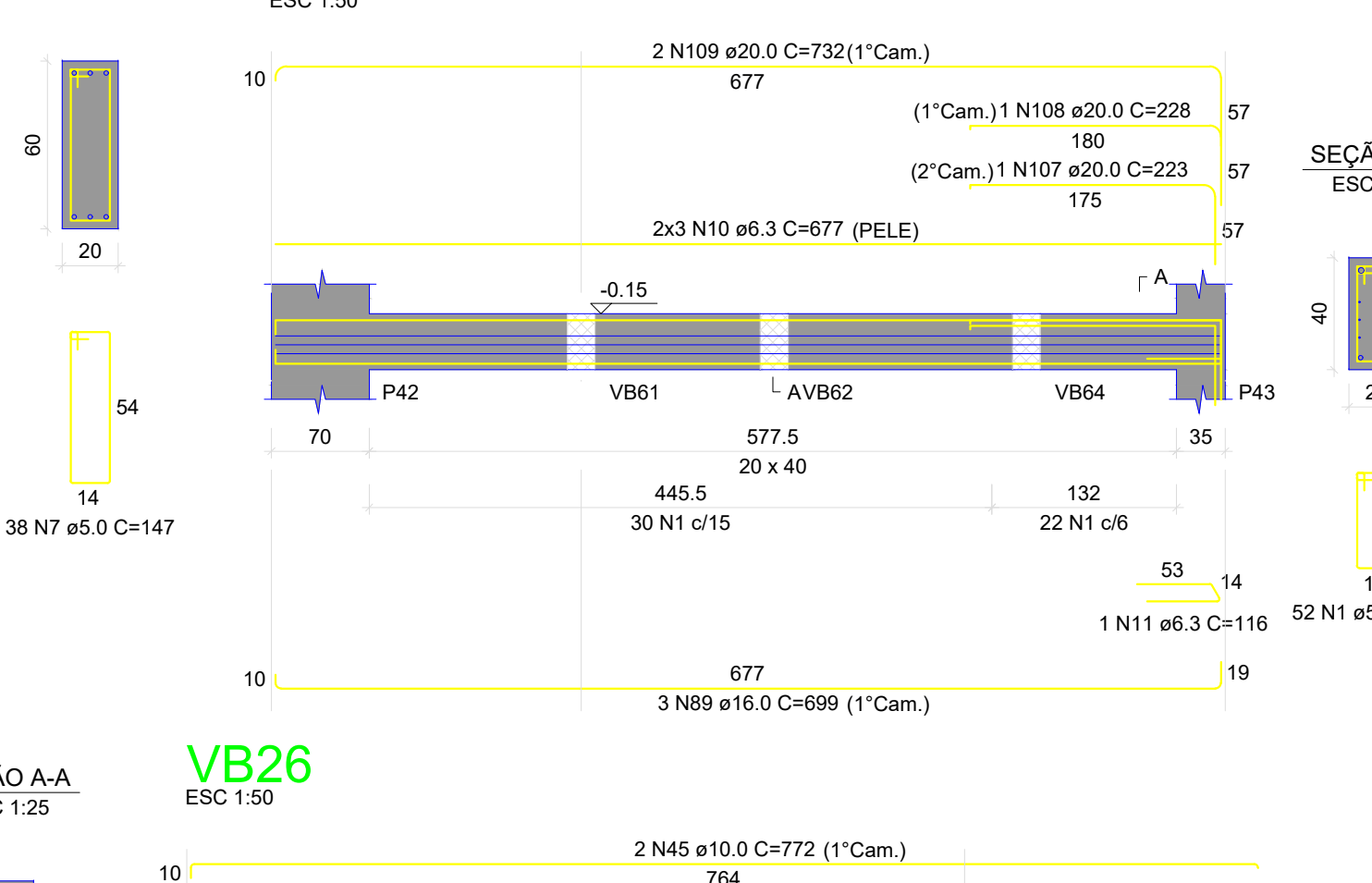
VB19



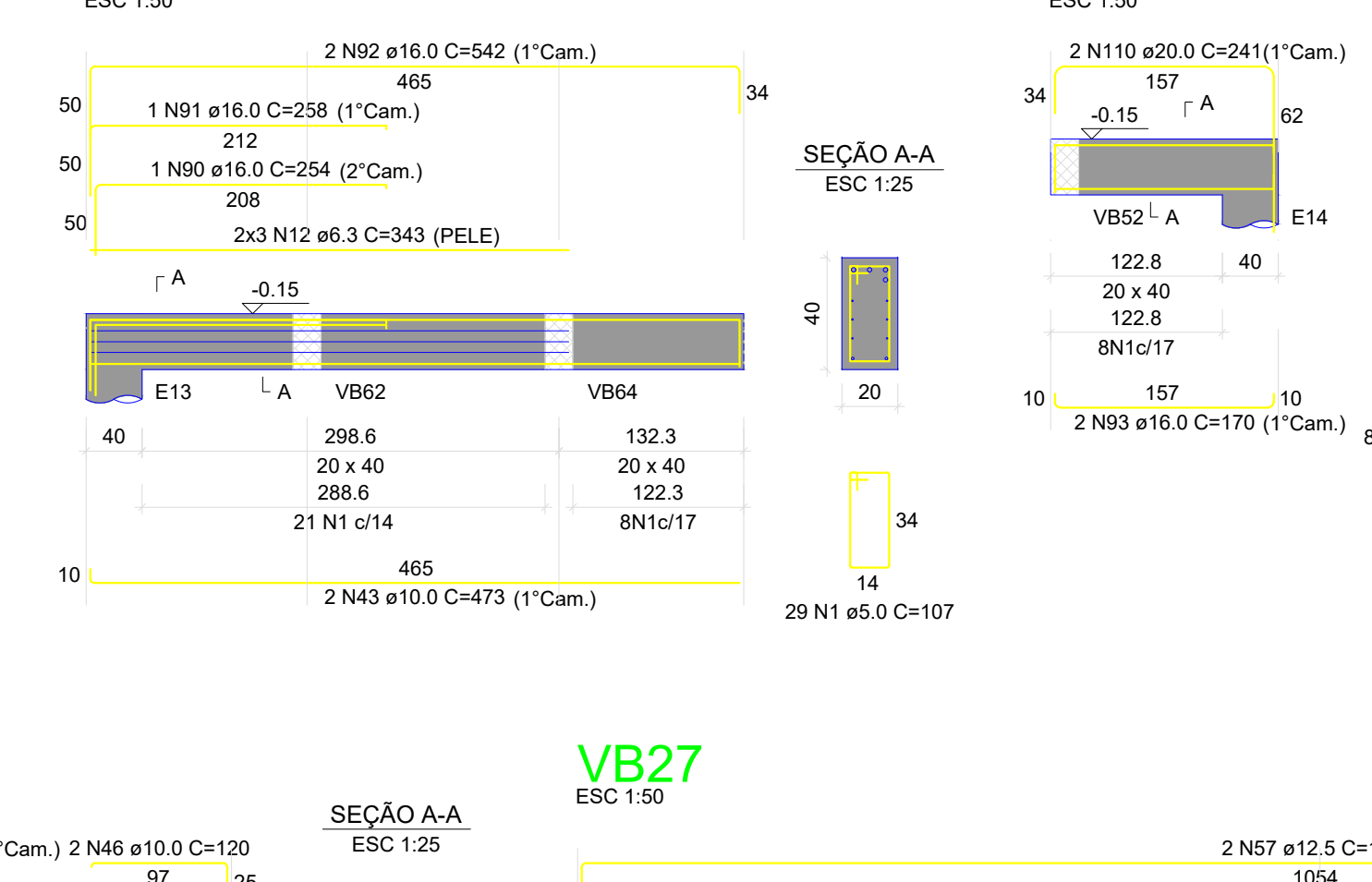
VB20



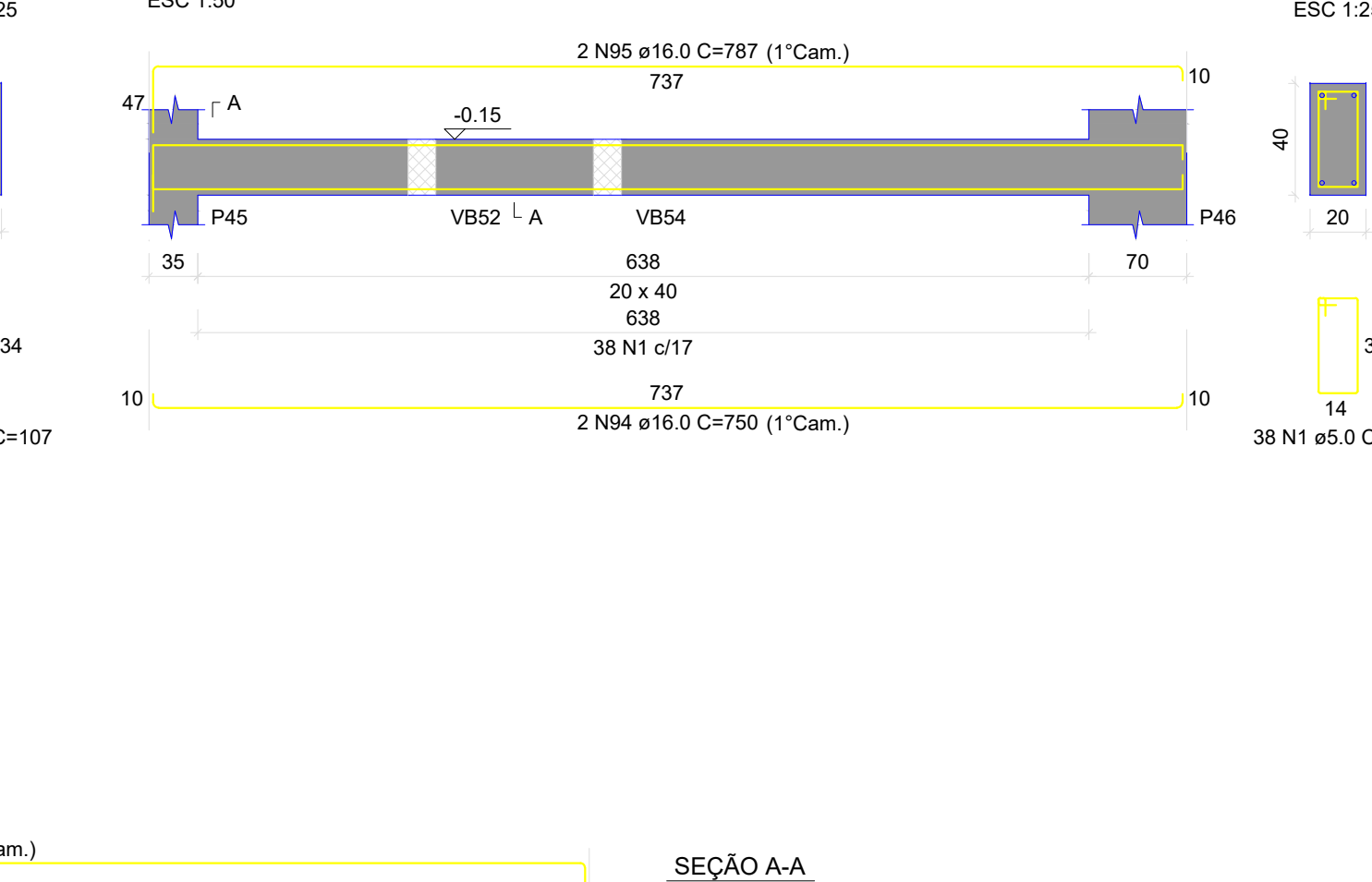
VB26



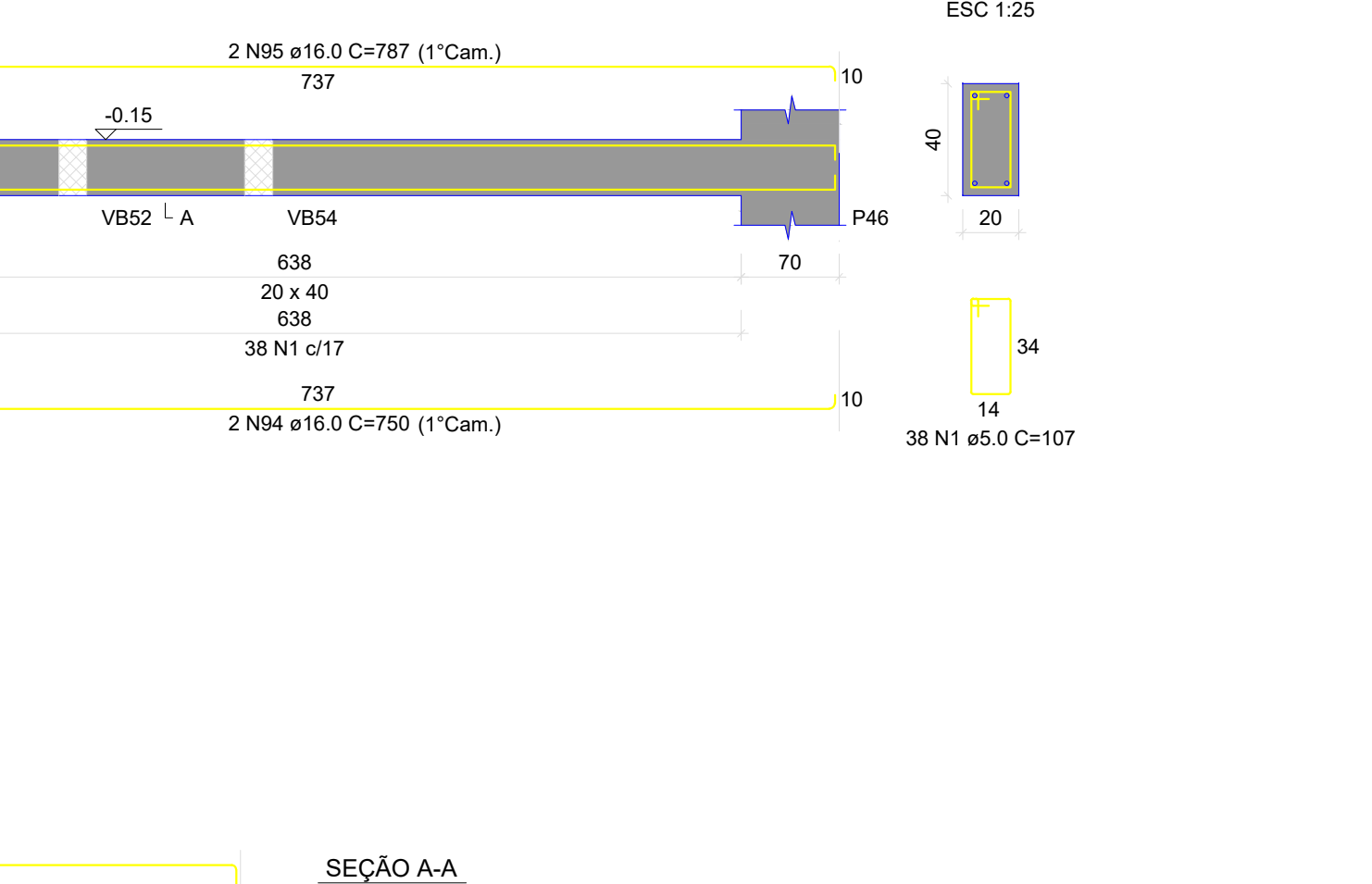
VB22



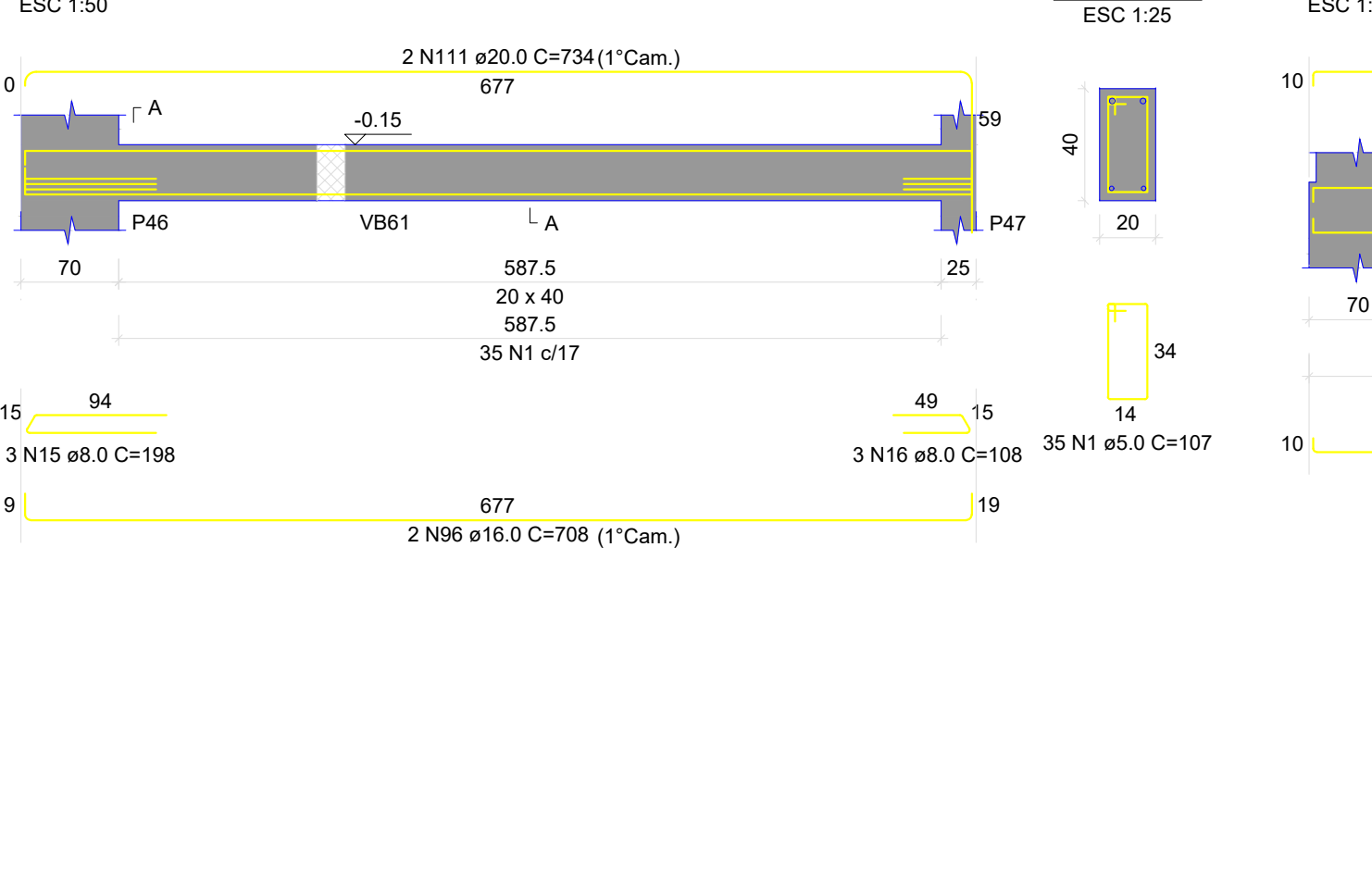
VB23



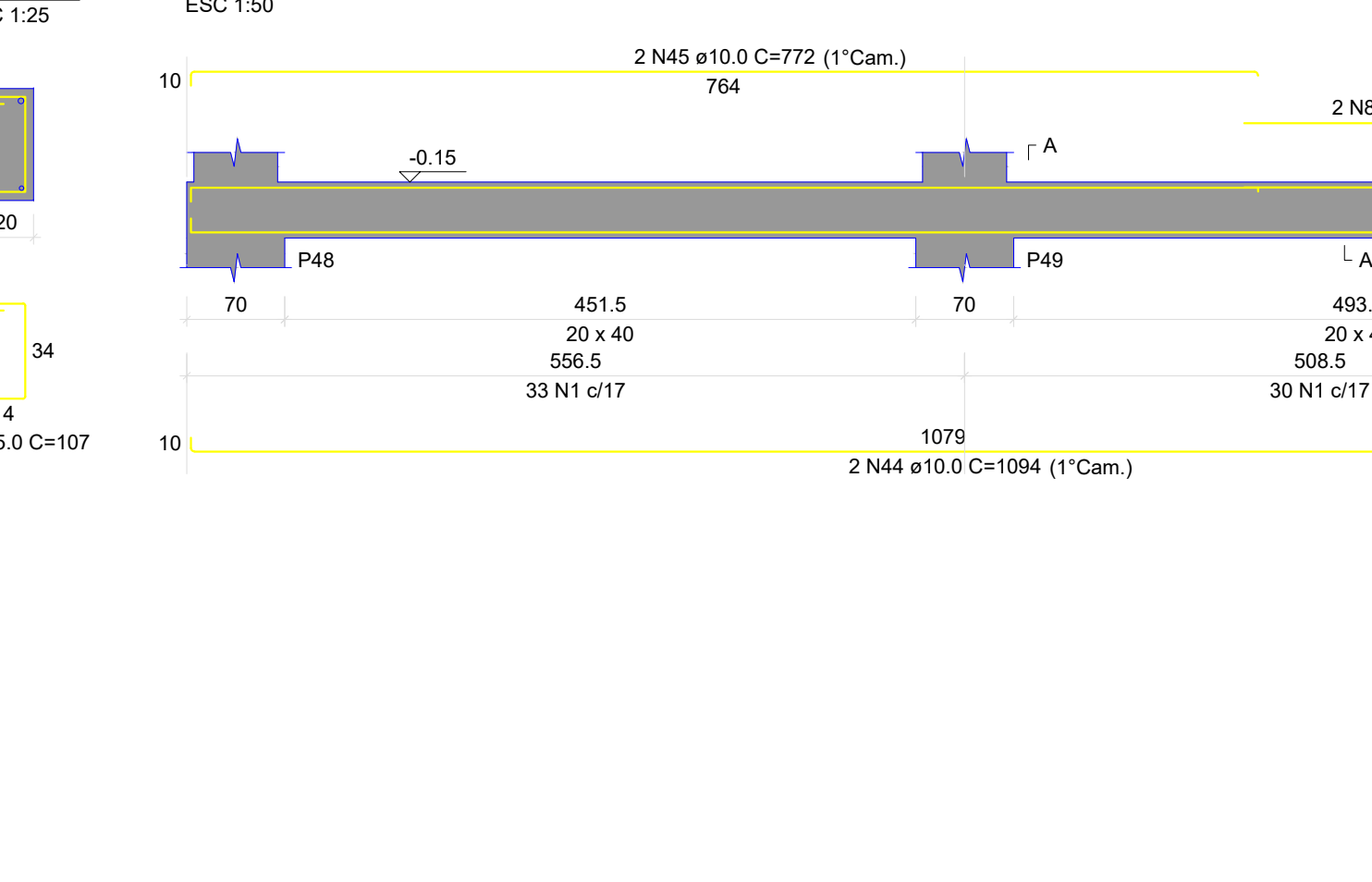
VB24



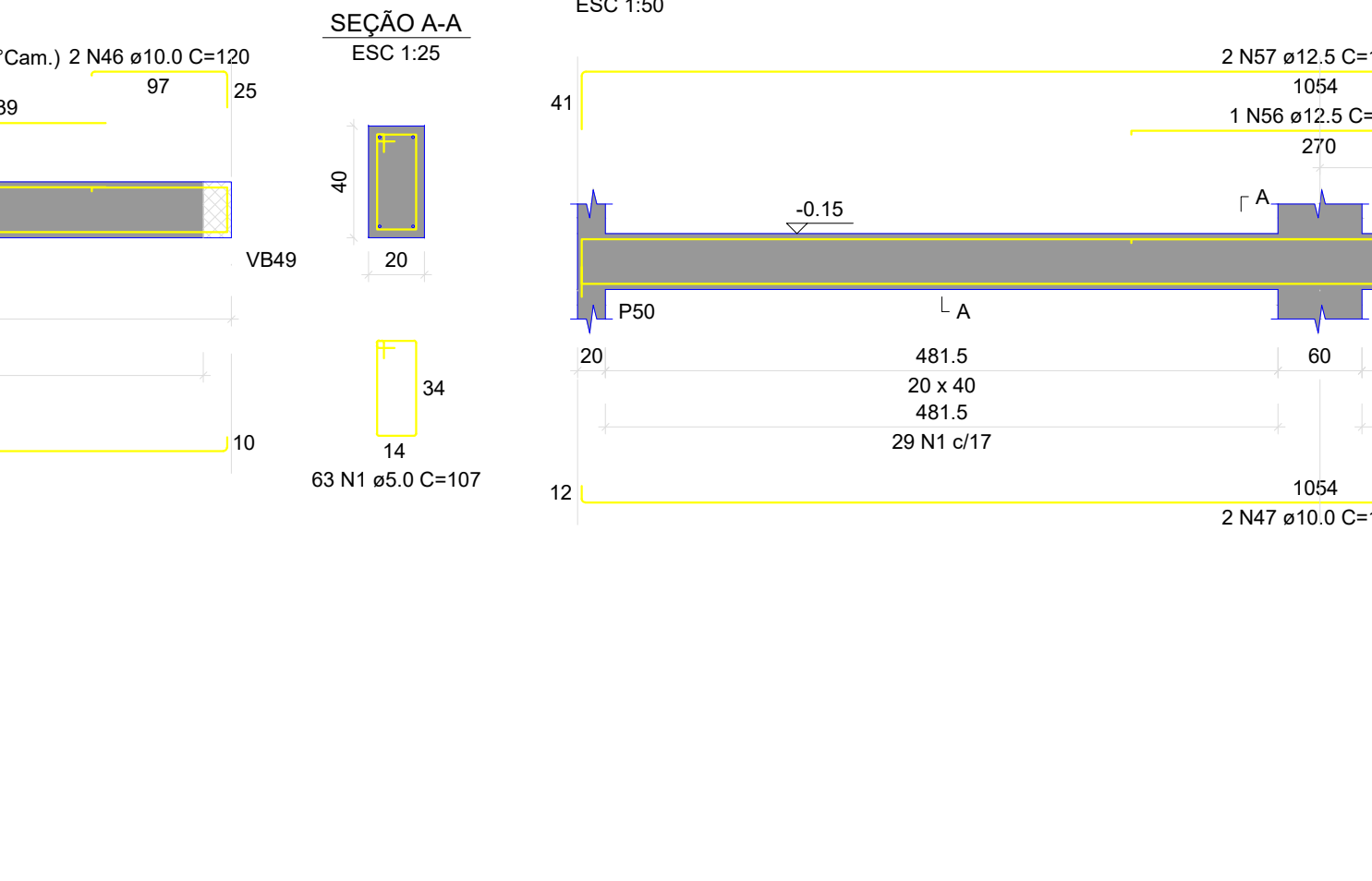
VB25



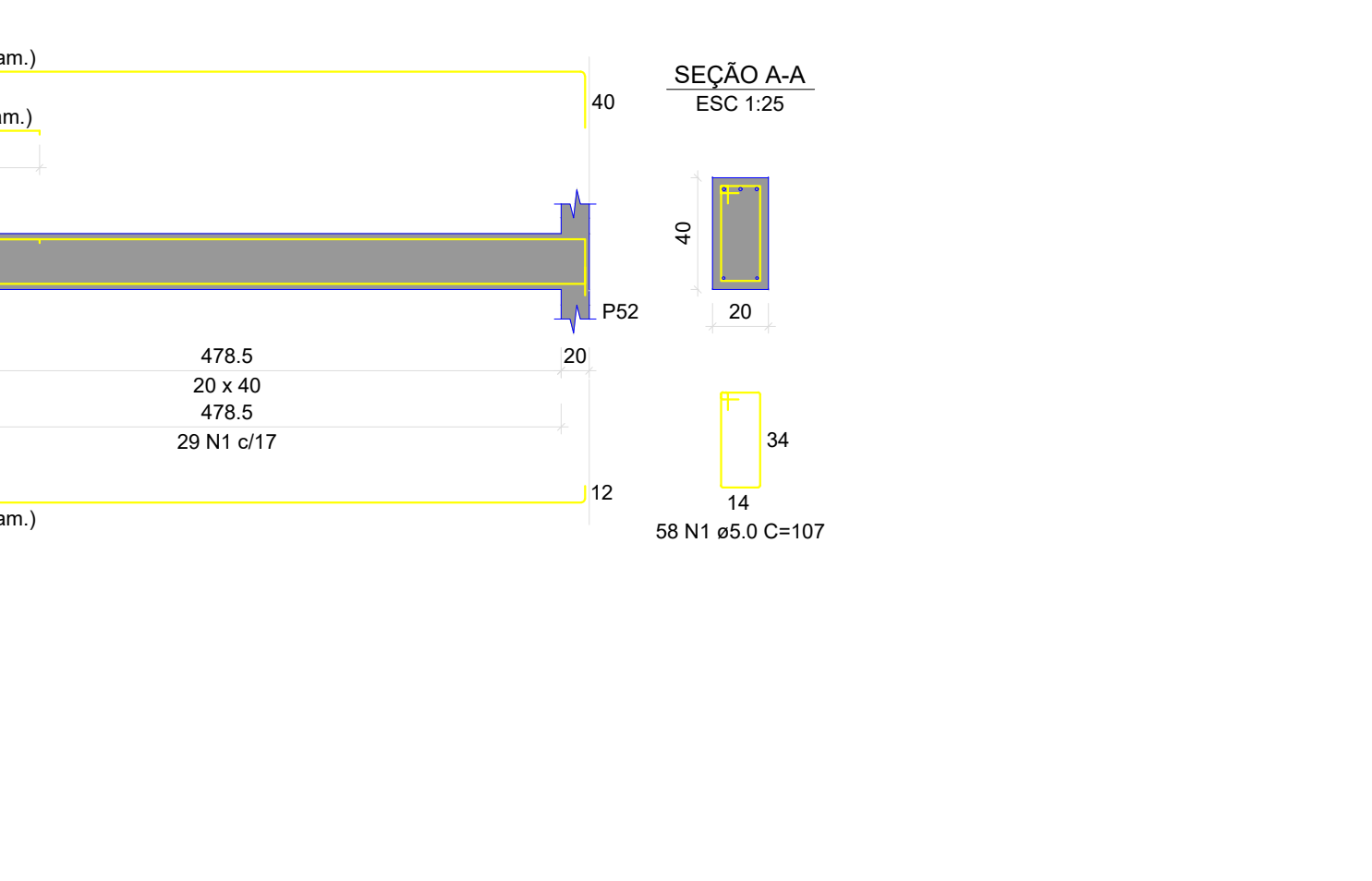
VB27



VB27



VB27



RELAÇÃO DO AÇO

ACO	N	DIAM (mm)	QUANT	C. TOTAL (cm)	G. TOTAL (cm)
CABO	2	5.0	4	225	800
CABO	2	5.0	4	225	800
CABO	4	5.0	4	362	1446
CABO	4	5.0	2	205	820
CABO	6	5.0	2	363	1446
CABO	8	5.0	2	339	1356
CABO	10	6.3	6	677	4062
CABO	11	6.3	6	677	4062
CABO	12	6.3	6	343	2058
CABO	13	6.3	6	343	2058
CABO	14	8.0	23	600	13800
CABO	15	8.0	3	198	804
CABO	16	8.0	3	198	804
CABO	18	10.0	2	511	1022
CABO	19	10.0	2	511	1022
CABO	20	10.0	4	225	900
CABO	21	10.0	4	225	900
CABO	22	10.0	2	822	1644
CABO	23	10.0	2	822	1644
CABO	24	10.0	2	818	1632
CABO	25	10.0	4	245	980
CABO	26	10.0	4	245	980
CABO	28	10.0	4	265	1060
CABO	29	10.0	4	265	1060
CABO	30	10.0	2	291	582
CABO	31	10.0	2	291	582
CABO	32	10.0	2	332	664
CABO	33	10.0	2	332	664
CABO	34	10.0	2	170	340
CABO	35	10.0	2	170	340
CABO	36	10.0	2	488	976
CABO	37	10.0	2	488	976
CABO	38	10.0	2	824	1648
CABO	39	10.0	2	824	1648
CABO	40	10.0	2	211	422
CABO	41	10.0	2	211	422
CABO	42	10.0	2	514	1028
CABO	43	10.0	2	472	944
CABO	44	10.0	2	1094	2188
CABO	45	10.0	2	1094	2188
CABO	46	10.0	2	120	240
CABO	47	10.0	2	1073	2146
CABO	48	12.5	2	1197	2394
CABO	49	12.5	2	386	772
CABO	50	12.5	2	873	1746
CABO	51	12.5	2	169	338
CABO	52	12.5	1	240	240
CABO	53	12.5	1	825	1650
CABO	54	12.5	1	481	962
CABO	55	12.5	1	1129	2258
CABO	56	12.5	1	270	270
CABO	57	12.5	1	289	578
CABO	58	16.0	2	603	1206
CABO	59	16.0	2	603	1206
CABO	60	16.0	2	260	520
CABO	61	16.0	2	1196	2392
CABO	62	16.0	2	603	1206
CABO	63	16.0	2	864	1728
CABO	64	16.0	2	869	1738
CABO	65	16.0	2	621	1242
CABO	66	16.0	2	621	1242
CABO	67	16.0	1	638	1276
CABO	68	16.0	1	323	323
CABO	69	16.0	1	323	323
CABO	70	16.0	2	402	804
CABO	71	16.0	2	294	588
CABO	72	16.0	2	907	1814
CABO	73	16.0	2	399	798
CABO	74	16.0	1	292	292
CABO	75	16.0	2	143	286
CABO	76	16.0	4	253	1012
CABO	77	16.0	1	253	253
CABO	78	16.0	2	770	1540
CABO	79	16.0	2	294	588
CABO	80	16.0	1	253	253
CABO	81	16.0	1	253	253
CABO	82	16.0	2	1197	2394
CABO	83	16.0	2	342	684
CABO	84	16.0	1	385	385
CABO	85	16.0	1	739	1478
CABO	86	16.0	1	173	173
CABO	87	16.0	1	294	294
CABO	88	16.0	3	786	2358
CABO	89	16.0	3	699	2097
CABO	90	16.0	1	254	254
CABO	91	16.0	1	254	254
CABO	92	16.0	2	542	1084
CABO	93	16.0	2	170	340
CABO	94	16.0	2	750	1500
CABO	95	16.0	2	787	1574
CABO	96	16.0	2	709	1418
CABO	97	20.0	1	211	211
CABO	98	20.0	7	805	5635
CABO	99	20.0	7	459	3213
CABO	100	20.0	3	554	1662
CABO	101	20.0	5	921	4605
CABO	102	20.0	5	921	4605
CABO	103	20.0	3	223	669
CABO	104	20.0	2	495	990
CABO	105	20.0	2	545	1090
CABO	106	20.0	5	921	4605
CABO	107	20.0	1	223	223
CABO	108	20.0	1	228	228
CABO	109	20.0	1	732	1464
CABO	110	20.0	2	241	482
CABO	111	20.0	2	734	1468

RESUMO DO AÇO

ACO	DIAM (mm)	C. TOTAL	QUANT + 0%	PESO + 0%
CABO	6.3	326.8	28	80
CABO	8.0	373.3	31	146.1
CABO	10.0	398.9	34	245.9
CABO	12.5	113.6	10	109.4
CABO	16.0	381.7	32	602.5
CABO	20.0	239.9	20	569.5
CABO	5.0	1334.6	112	205.7

PESO TOTAL (kg) 1753.5

CABO 205.7

Volume de concreto (C-30) = 18.64 m³

Área de forma = 216.4 m²

HISTÓRICO DE REVISÕES/ADEQUAÇÕES

Nº da	Descrição	Responsável	Data
RE00	Entrega inicial dos Projetos	Eng. Lucas	29/07/2025
RE01	Revisão detalhamento de escadas/quadro de resumo de aço de paredes de concreto	Eng. Lucas	22/09/2025

PROJETO EXECUTIVO

Os projetos referentes ao Processo SEI Nº 20252020000885, encontram-se dentro das normas e exigências da Secretaria de Estado da Infraestrutura - SEINFRA, tendo sido elaborado por profissionais habilitados.

SPO - SUPERINTENDÊNCIA DE PROJETOS E ORÇAMENTOS DE OBRAS

SEP - GERÊNCIA DE PROJETOS

SEINFRA
Secretaria de Estado da Infraestrutura

GOV. DE GOIÁS
O ESTADO QUE DÁ CERTO

EDIFÍCIO THE PRIME TAMANDARÉ OFFICE
Rua 5, Nº 691 – 2º andar, Setor Oeste, Goiânia-GO – CEP 74.115-060

FUNDAÇÃO EM CONCRETO ARMADO

RUA 26, 513-561 - AV. UNIVERSITÁRIA, 1750 - SETOR LESTE UNIVERSITÁRIO, CEP 74605-010, GOIÂNIA-GO

ESCOL